

Water Reuse Past, Present, Future

City of Cheyenne Board of Public Utilities

Matt Buelow

Bryce Dorr



“THE STORY OF THE LONG STRUGGLE FOR WATER IN CHEYENNE is typical of the general situation in the arid West and leads to the general conclusion that in order to meet the demands of the future, the existing sources of water must be conserved, and that the residents of this area must learn to use water so that one gallon of the supply provided by nature will perform the duty of two gallons as it is now used.”

W. J. Dinneen, Board President (circa 1951)



Embracing Recycled Water

- Public outreach
 - Advocates developed before public outreach.
 - Messages embraced history and promoted future.

1 gallon...

will perform the work of 2

The Water Cycle in Cheyenne
from clouds to earth

Providing the Right Water for the Right Uses!

WE HAVE THE SAME AMOUNT OF WATER on Earth today as we did 3 billion years ago. Water moves in a continuous process called the water cycle. That is

The graphic features a central globe with a green circular arrow around it. The text 'The Water Cycle in Cheyenne' is at the top, and 'from clouds to earth' is written along the arrow. Below the globe are several small circular icons representing different stages of the water cycle: a cloud, a rain cloud, a water drop, a recycling symbol, and a water tap.

Learn how 1 gallon of water could perform the work of 2

Community Open House/Public Meeting
Come learn about recycled water and how it can produce a safe, drought-resistant water supply for Cheyenne.

The City of Cheyenne, Wyoming Board of Public Utilities (BOPU), with the Wyoming Department of Environmental Quality (WDEQ) invites you to a Community Open House/Public Meeting to discuss how recycled water can be used in Cheyenne.

Learn about and comment on the BOPU plan to treat and transmit recycled water for

February 22, 2006
4:00 pm - 7:00 pm
Kiwanis Community House
Lions Park
4603 Lions Park Drive
Cheyenne, Wyoming

The graphic has a light blue background with a water drop shape containing the text 'Learn how 1 gallon of water could perform the work of 2'. Below this is a section for a 'Community Open House/Public Meeting' with details about the date, time, and location. The bottom part of the graphic contains introductory text about the meeting's purpose.

Reuse water in Cheyenne

Started 2007

Offset 500 acre-ft/year

“Class A” meets 2.2 CFU/1000mL limit

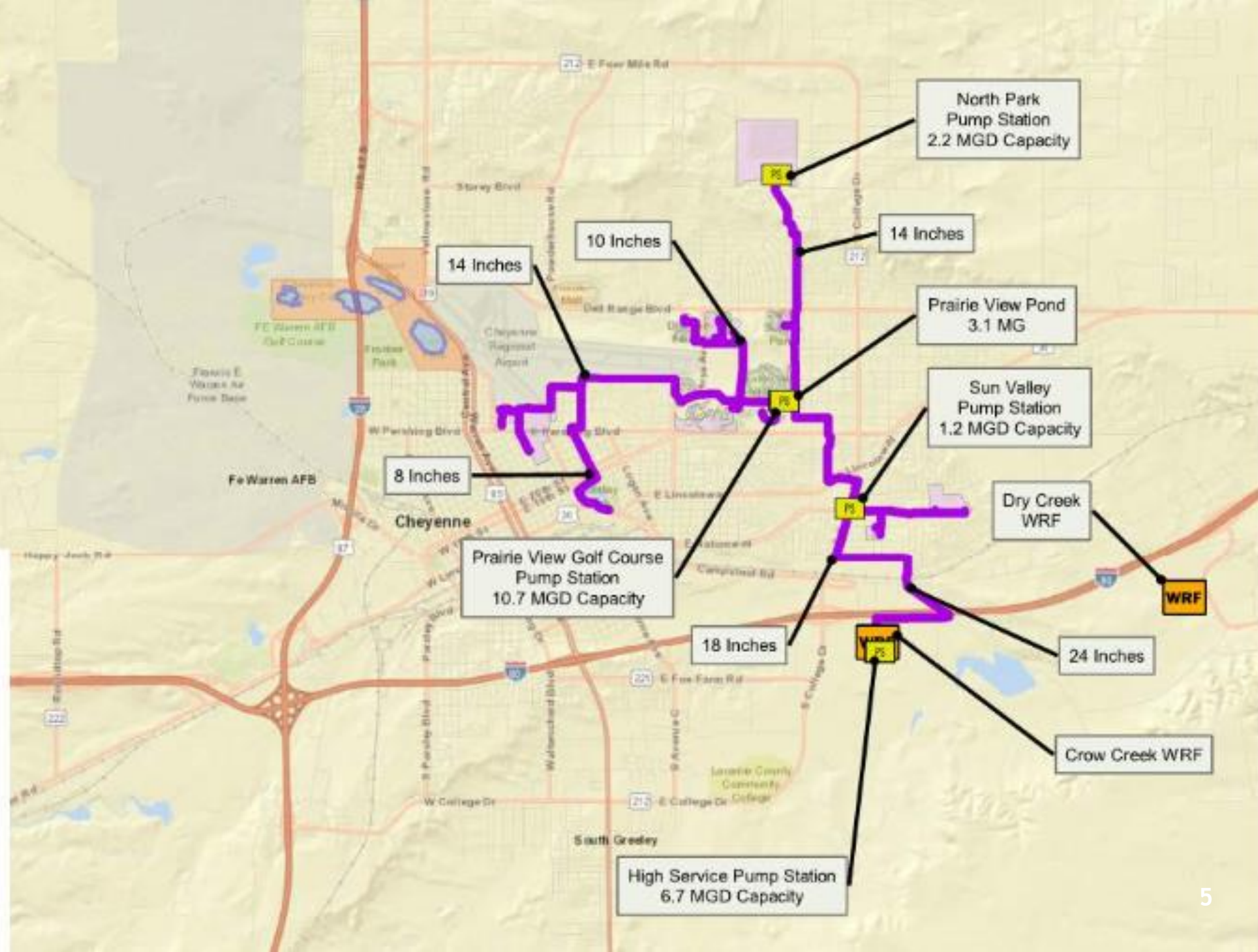
Currently used on:

- Irrigated parks
- Athletic Fields
- Cemeteries
- Schools
- Green areas

LEGEND

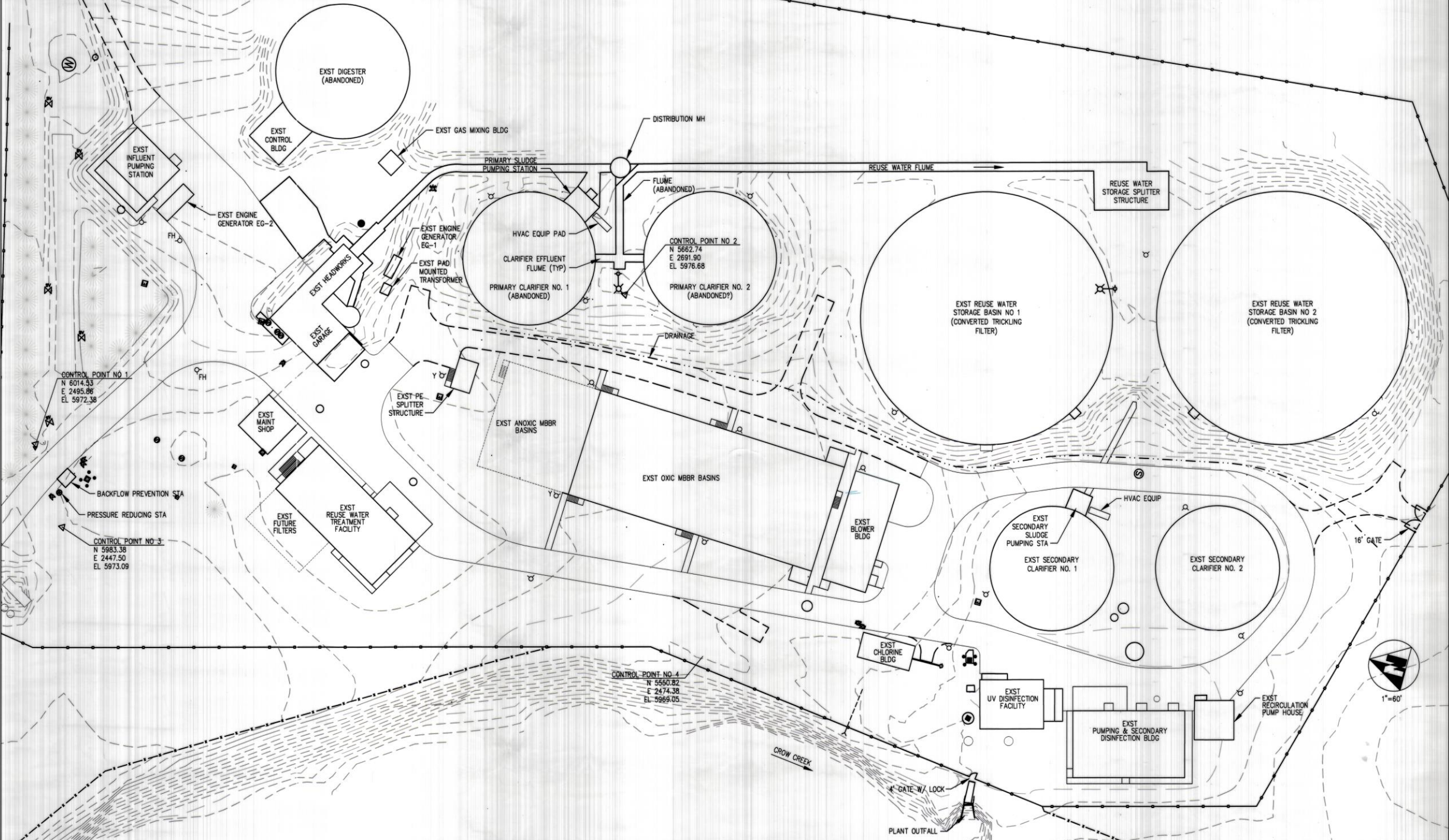
-  Existing Reuse Main
-  Existing Reuse Area
-  Existing Raw Water Irrigation Area
-  Existing Reuse Pump Station
-  Water Treatment Plant
-  Water Reclamation Facility

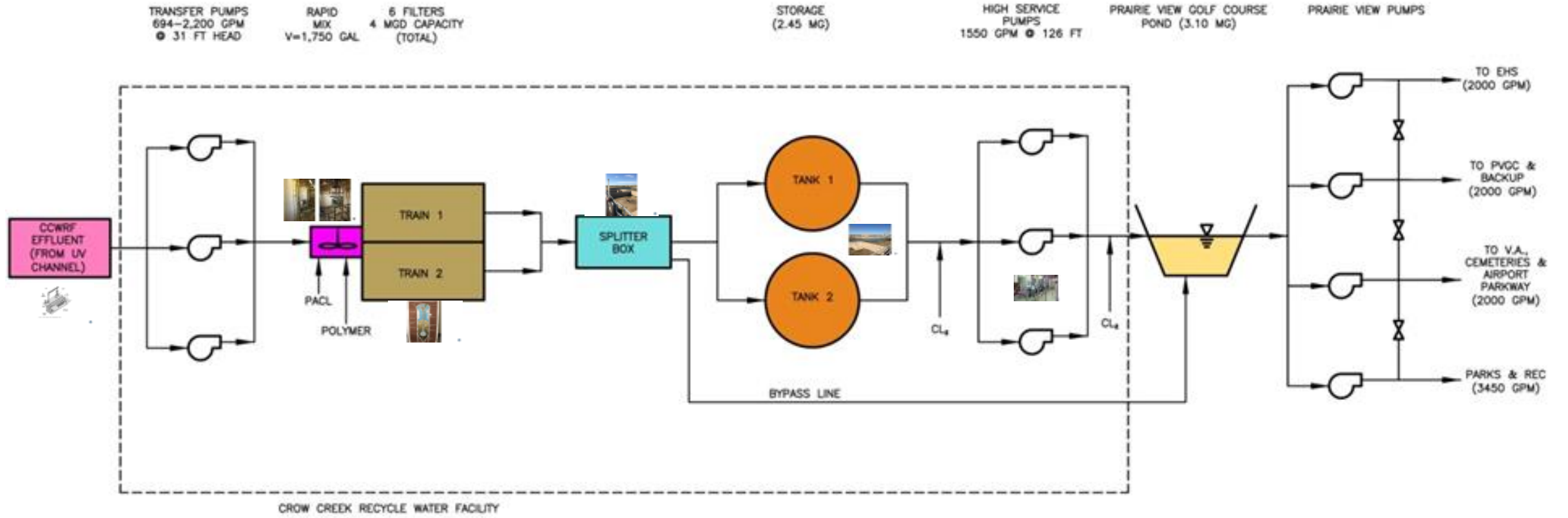
DATA SOURCES: Cheyenne BCPU, HDR, Esri



PROJECT: CHEYENNE, WYOMING
 LOCALITY: PROCL. REUSE WATER
 DATE: OCTOBER 2007
 DRAWING NO: 467
 TASK: 001

SEND TO: JACK WERNER, PE
 PHONE: (307) 634-7848





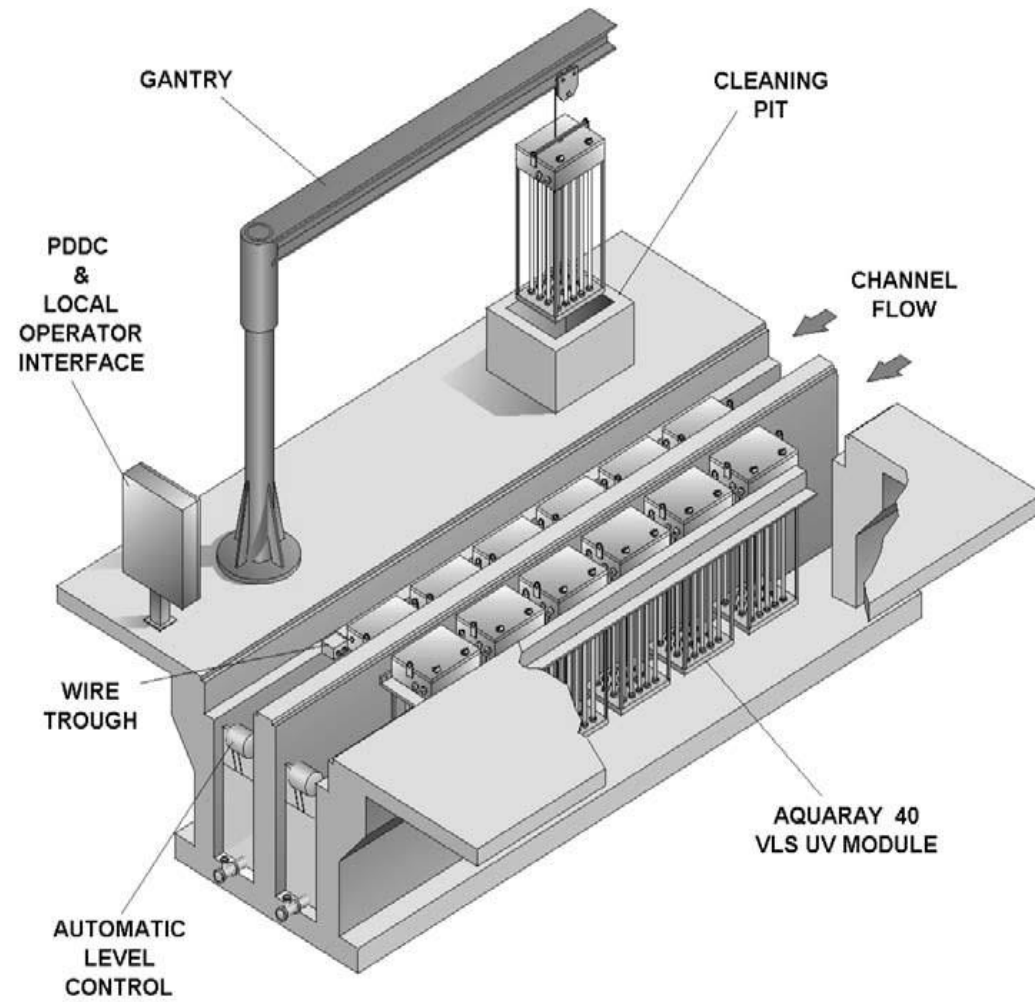
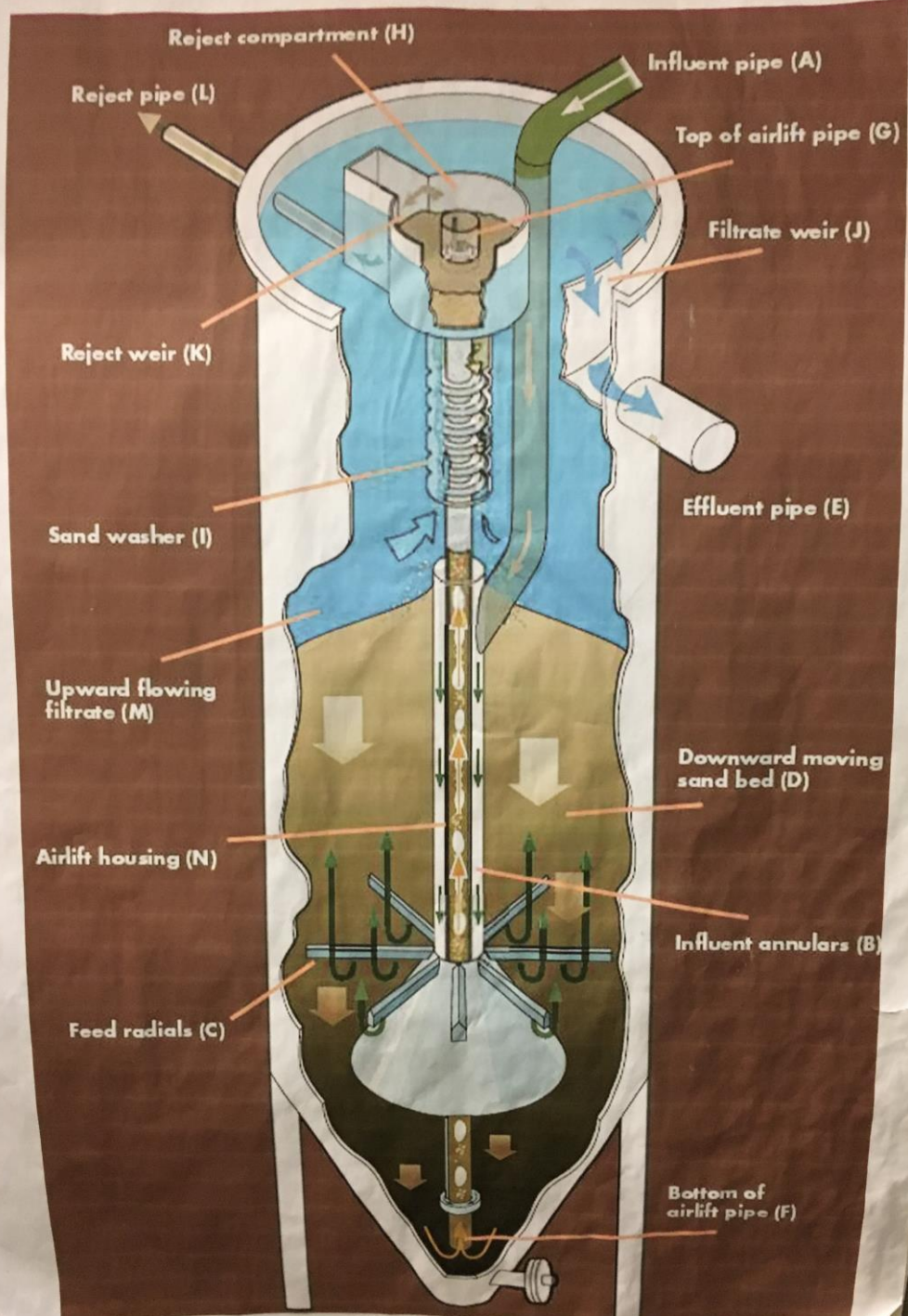


Figure 1 – Typical Aquaray[®] 40 VLS UV Disinfection System Layout











Reuse Water Quality

Parameter	Units	Degree of Restriction on Use			Class A Pre-Blend (2009 – 2017)	Prairie View Pond Post Blend (2017)
		None	Slight to Moderate	Severe		
EC	dS/m	<0.7	0.7 - 3.0	>3.0	1.18	0.84
TDS	mg/L	<450	450 - 2000	>2000	629	537
pH	-	6.5 - 8	8 - 8.4	>8.4	8.0	no data
Na	mg/L	<69	>69	-	97	85
B	mg/L	<0.7	0.7 - 3.0	>3.0	no data	no data
Cl ⁻	mg/L	<106	>106	-	110	94
HCO ₃	mg/L	<92	92 - 518	>518	176	156
NO ₃	mg/L -N	<5	5 - 30	>30	9.7	5.9

- | Acidify Reuse Water
- | Salinity Assessment
- | Gypsum Soil Amendments
- | Nutrient Loading & Fertilization Practices
- | Application Practices

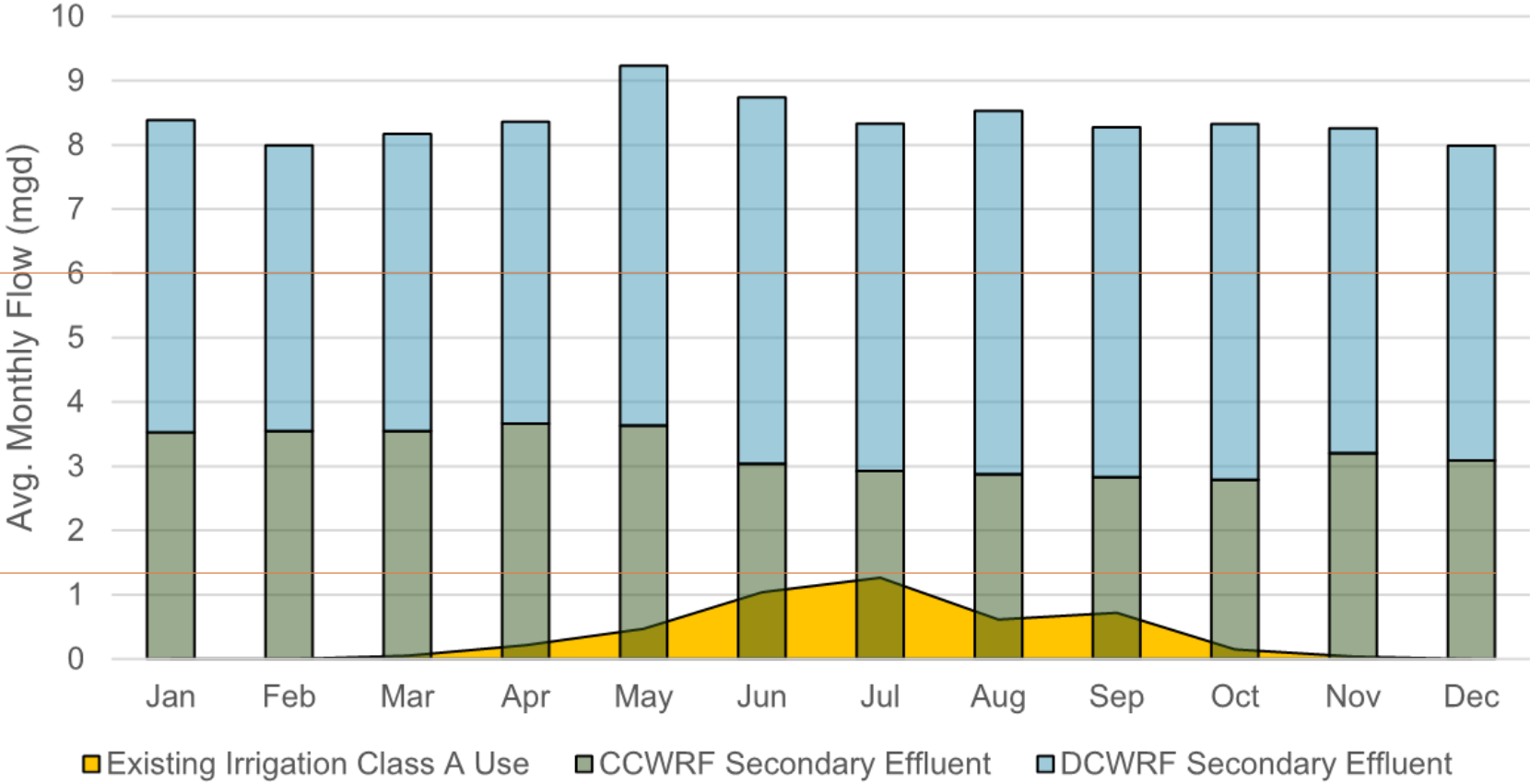
Sources:(WateReuse Foundation, 2007), Food and Agriculture Organization (FAO, 1985)

Reuse Supply and Demand

Peak Hour Demand = 6 mgd

Class A Treatment Capacity = 4 mgd

Max Day Reuse Demand < 2mgd



↑ Storage

2019 Reclaimed Water Reuse Study

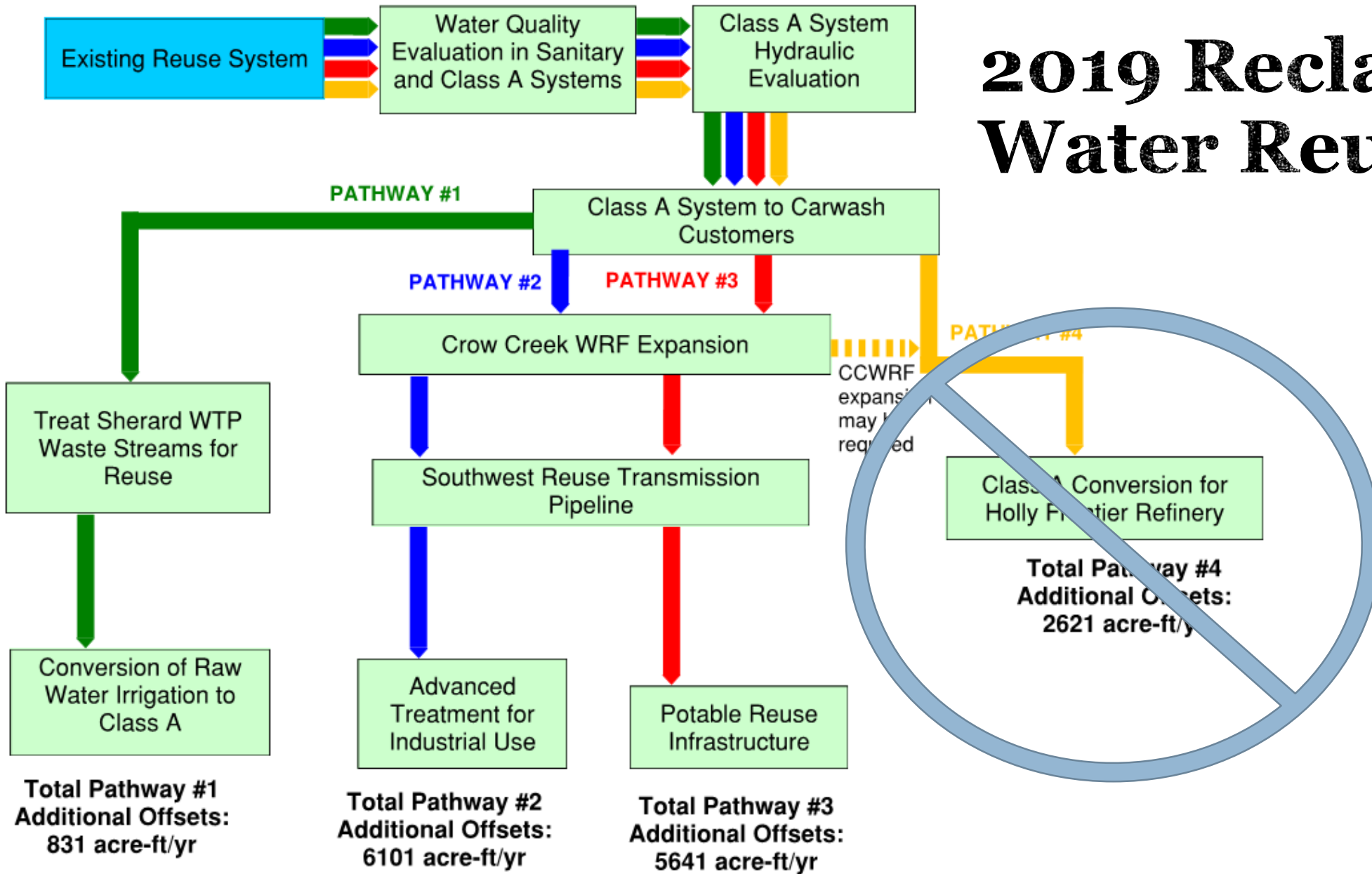




Image Source: isg-one.com

Data Center Destination

Pro

- High Summer Volume
- Relatively Clean Discharge
- Funding Partner

Con

- Slug Loading
- High TDS
- Treatment, Distribution, and Sink

Data Center Reuse Catch-22



PHIL VELASQUEZ/CHICAGO TRIBUNE/GETTY IMAGES

If we build it, will they come?

- Customer Cooperation
- Public Private Partnerships
 - Commercial
 - Industrial
 - Residential
- Codes and Regulations
- Rate Structure

Questions

Matt Buelow

- Email: mbuelow@cheyennebopu.org
- Phone: 307-637-0868

Bryce Dorr, P.E.

- Email: bdorr@cheyennebopu.org
- Phone: 307-432-2618

