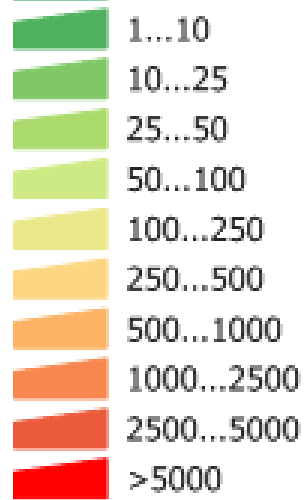
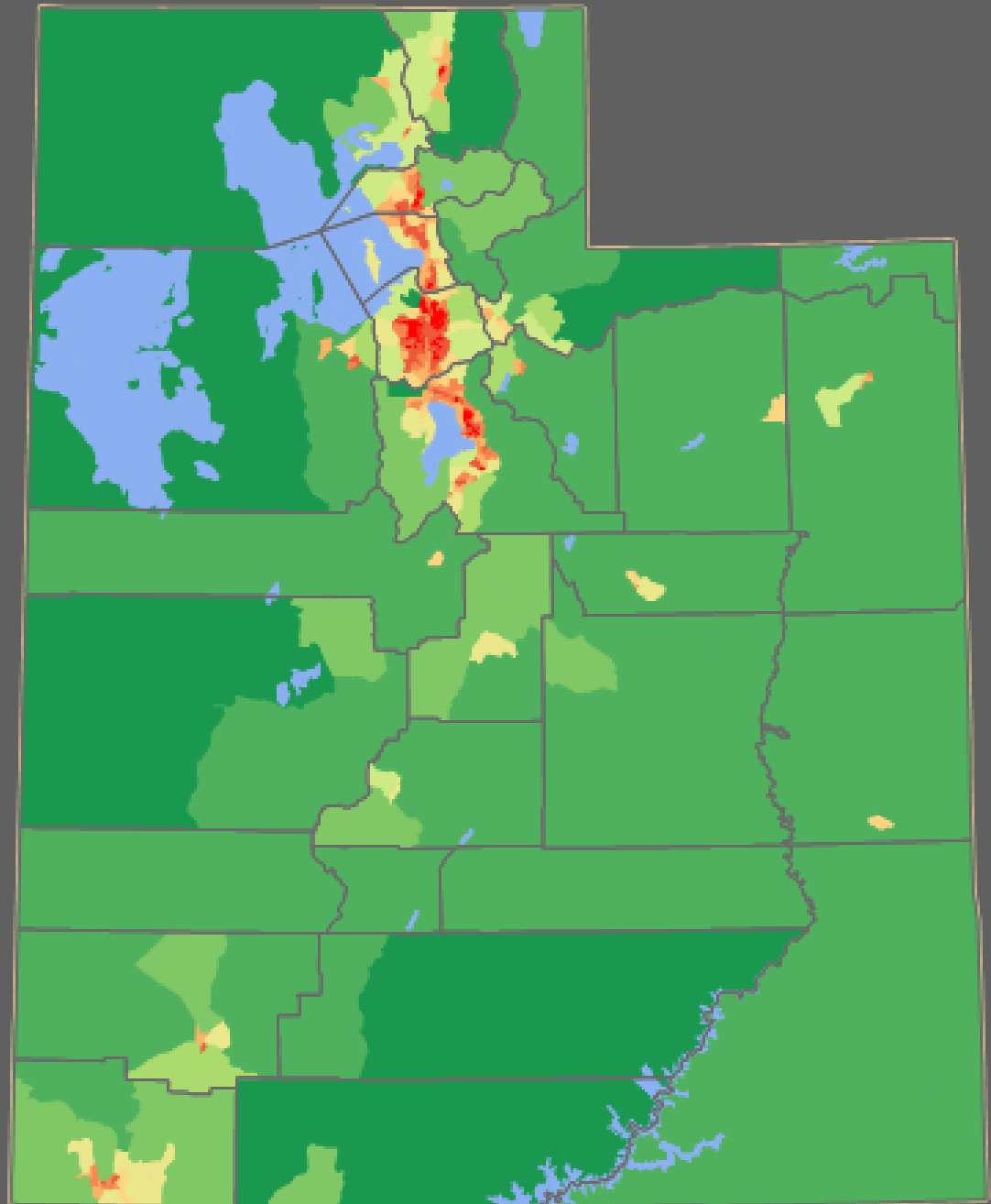


Categorizing IUs



Source: U.S. Census Bureau
Census 2010 Summary File 1
population by census tract



https://commons.wikimedia.org/wiki/File:Utah_population_map.png

What is your
program doing to
find Users?

IWS

- Driving
- Newsletters
- Internet
- Business Licenses
- Building Permits
- Remodeled Buildings
- Water Bills
- Yellow Pages
- Inspections as needed

What I do

– Envirofacts

<https://www3.epa.gov/enviro/facts/multisystem.html>

– Google map

– Business License Review

– SIC/NAISC

– OSHA and Stormwater

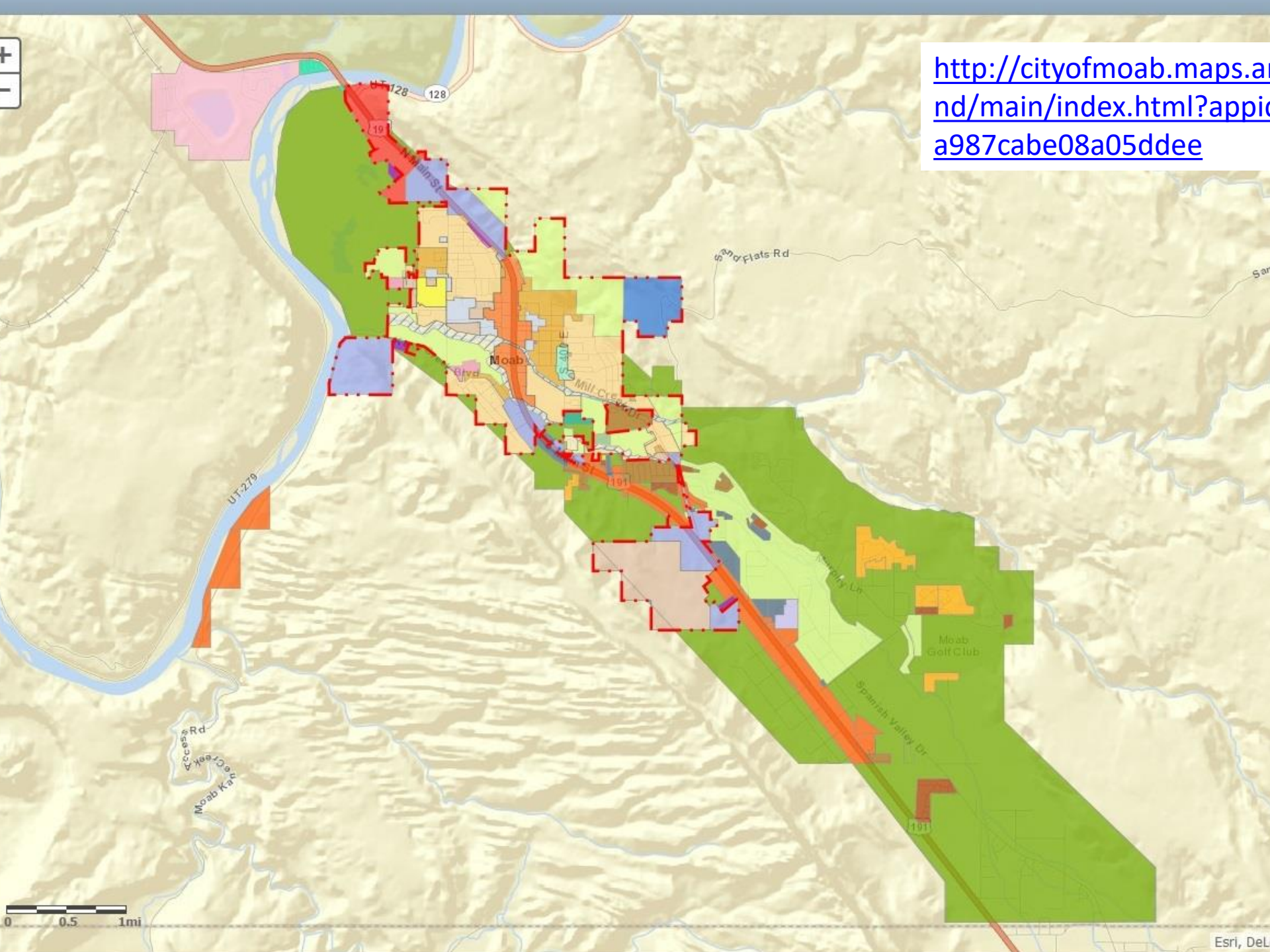
– City Meeting Minutes

– https://www.ci.tracy.ca.us/documents/Categorical_User_SIC_Code_List.pdf

- Pharmaceutical should include the SIC Code 2836

– <https://www.epa.gov/eg/industrial-effluent-guidelines>

<http://cityofmoab.maps.arcgis.com/apps/opsdashboard/index.html?appid=a987cabe08a05ddee>



What questions
are you asking of
the community to
find IUs?

Questions

- Who's impacting the facility
- Any plugging of the Sewer
- Any loading issues occurring
- Who has flows greater than 25,000 gpd or 5% of the hydraulic flow
- Discharges of hazardous waste
- Any facilities doing categorical process

Identified IUs for Inspection

- Porta Potty Deodorizer
- Vitamin manufacturer
- Mining Manufacture
- Brewery
- Zero discharging metal finisher

Is the IU a SIU

- CIU or
- SIU
 - 25,000 gpd of process wastewater,
 - 5% dry hydraulic or organic capacity, or
 - Reasonable potential for
 - Adversely affecting the POTW or
 - Violating a Pretreatment Standard (PS) or Requirement
 - **Harm the workers, public, POTW or the environment**
 - Unless no reasonable potential to harm or violate a PS

SIU

- DO NOT FOCUS ON 25,000 GDP
- FOCUS ON
 - PROTECTING WORKERS
 - PROTECTING THE PUBLIC
 - VIOLATING PRETREATMENT STANDARDS
 - PROTECTING THE POTW

Things that have
come up in Utah
regarding
Categorizing CIUs

- <https://www.epa.gov/eg/industrial-effluent-guidelines>



40 CFR 433.10 (a)

Applicability

- Electroplating,
- Electroless Plating,
- Anodizing,
- Coating (chromating, phosphating, and coloring),
- Chemical Etching and Milling, and
- Printed Circuit Board Manufacture
- Except paragraph (b) and (c)

What happens if one of six are not discharged but there is a discharge from one of the 40 process operations?

40 CFR 433.10 (b)

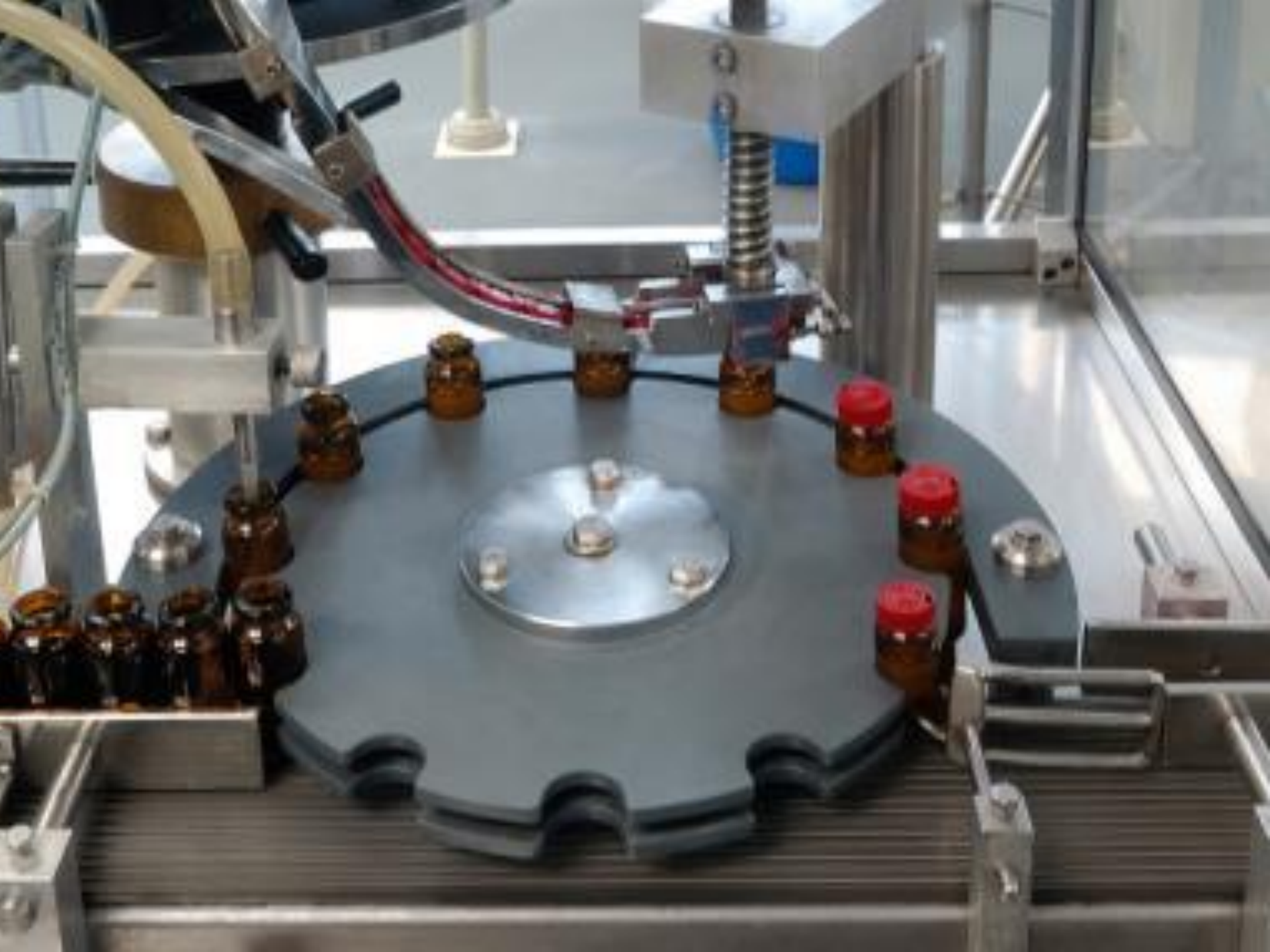
Applicability

- Shall not apply if
 - Nonferrous metal smelting and refining (40 CFR part 421)
 - Coil coating (40 CFR part 465)
 - Porcelain enameling (40 CFR part 466)
 - Battery manufacturing (40 CFR part 461)
 - Iron and steel (40 CFR part 420)
 - Metal casting foundries (40 CFR part 464)
 - Aluminum forming (40 CFR part 467)
 - Copper forming (40 CFR part 468)
 - Plastic molding and forming (40 CFR part 463)
 - Nonferrous forming (40 CFR part 471)
 - Electrical and electronic components (40 CFR part 469)

40 CFR 433.10 (c)

Applicability

- Does not apply
 - Metallic platemaking and gravure cylinder preparation conducted within or for printing and publishing facilities; and
 - Existing indirect discharging job shops and independent printed circuit board manufacturers which are covered by 40 CFR part 413.



Pharmaceutical

40 CFR 439.0

- (a) pharmaceutical products, which are generally, but not exclusively, reported under **SIC 2833**, SIC 2834 and SIC 2836
- The facility does not have an exclusion in (c)

Chemistry Teacher/Spill Coordinator

- “...any chemical that is intended to support or improve human health and is administered or delivered in a specific dosage to be a type of pharmaceutical, and that would include vitamins, minerals, and supplements such as "antioxidants“”



Plastic Molding and Forming

40 CFR 463.1

- (a) Plastics molding and forming processes
- (b) Excluded plastics resin manufacturers

Rubber Manufacturing

40 CFR 428.50

- **molded, extruded, and fabricated rubber products, foam rubber backing**

A 3D rendering of a modern hospital building with a curved glass facade. A white sign with a red cross and the word 'HOSPITAL' is mounted on the building. The sign is curved to follow the building's shape. The word 'HOSPITAL' is in large, bold, black letters. There are red crosses on both ends of the sign. The building's glass reflects the sky and the sign itself.

+ HOSPITAL +

Hospital

40 CFR 460

- Discharges resulting from the functional operations of the hospital point source category
- No Pretreatment Standards are listed



511PAYOFF.COM

Dental

40 CFR 441

- (a) Applies to dental discharges except
 - Not SIUs unless CA designates
 - Dental specialties see rule
 - Mobile unit
 - Office does not discharge amalgam wastewater or do not remove except must submit one-time report
 - 15.5 Phase-out of the rule
 - <https://www.ecfr.gov/cgi-bin/text-idx?SID=8cd479a3a836f1837caa08f7630d8698&mc=true&node=pt40.32.441&rgn=div5>



Dairy Pretreatment for Existing Source

40 CFR 405.14

- Must comply with 40 CFR part 403
- In addition, the following pretreatment standard establishes the quantity or quality of pollutants or pollutant properties controlled by this section which may be discharged to a publicly owned treatment works by a point source subject to the provisions of this subpart.

Pollutant or pollutant property	Pretreatment standard
pH	No limitation.
BOD5	Do.
TSS	Do.

Dairy Pretreatment for New Source

40 CFR 405.16

- Must comply with 40 CFR part 403

Things to discuss

- None of the pollutants are present
- The limit states reserved
- 430.16 not use the biocide but must certify
- 455.32 (Help AI what do we do)
 - No discharge of process wastewater to navigable waters
 - PSES and PSNS are reserved
- No discharge to POTW 40 CFR 435



Metal Molding and Forming

- Must know production
- [40 CFR 464 \(4\).xlsx](#)

Websites

TRI

https://cfpub.epa.gov/dmr/tri_search.cfm

EHCO

<https://echo.epa.gov/>

Utah Business Licenses

<https://secure.utah.gov/bes/>