



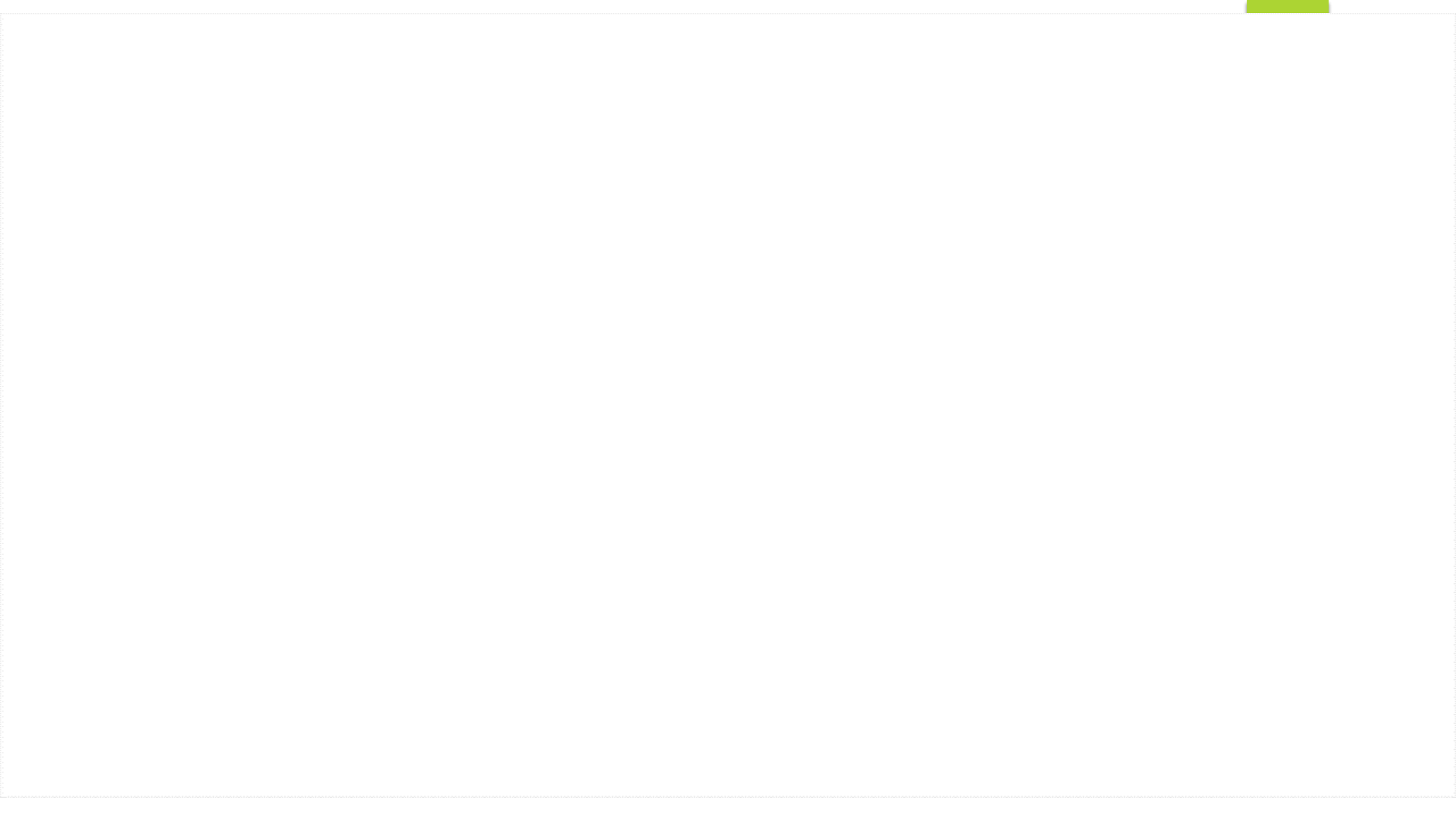
Hydro-Demolition

CHRISTI PRIEST

CENTRAL VALLEY WATER RECLAMATION FACILITY

What is Hydro-Demolition ?

A concrete removal technique which utilizes high-pressure water to remove deteriorated and sound concrete as well as asphalt and grout.



Mt. Olympus

Construction Manager

Rampart

no not in our collection system
no nope no nope

We will Comply With All rules.

This is great look at all The Happy People Papers

Best just to listen

me



Rampart Fairy Tail



- 18,000-gallon weir tank for the initial settling of suspended solids with a 180 micron filter.
- 18,000-gallon secondary weir tank for settling.
- Continues pH balancing system, consisting of: Carbon Dioxide (CO₂) gas tanks, pressure regulation, and 100 feet of flexing hose for mixing.
- Letters of authorization from sewer districts in the Midwest and east coast. “Happy People Papers”

nent



25 Yard Roll off box with a 180 Micron Filter.
2-20,000 Gallon Weir Tanks



Bolted-in perforated basket for easy removal



We will pump water to the next tank to ensure we have reduced TSS as much as possible



Coils are 100 feet long to mix the CO2 with the water to reduce pH levels



A Tank to clear from prior use 1 water is treated tested every tin

Flow meter to keep track of how much we discharge



Test point

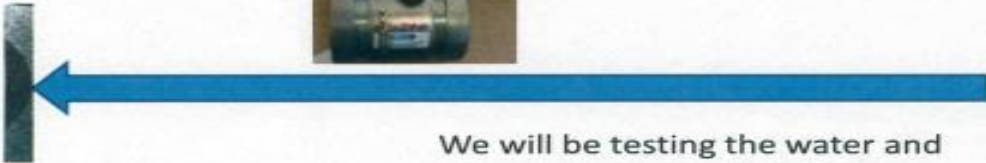


Digital Turbidity Meter & Digital pH meter



We will pump water back the treatment process if p have not been met

We will be testing the water and recording our results before we discharge







F-562
Sewer Discharge location

Fire Hydrant

210

190

Google earth

© 2016 Google



Google earth

© 2016 Google

Whitewater Cir

Fire Hydrant

Sewer Discharge location

F-458

Boji Route

E-5500 S

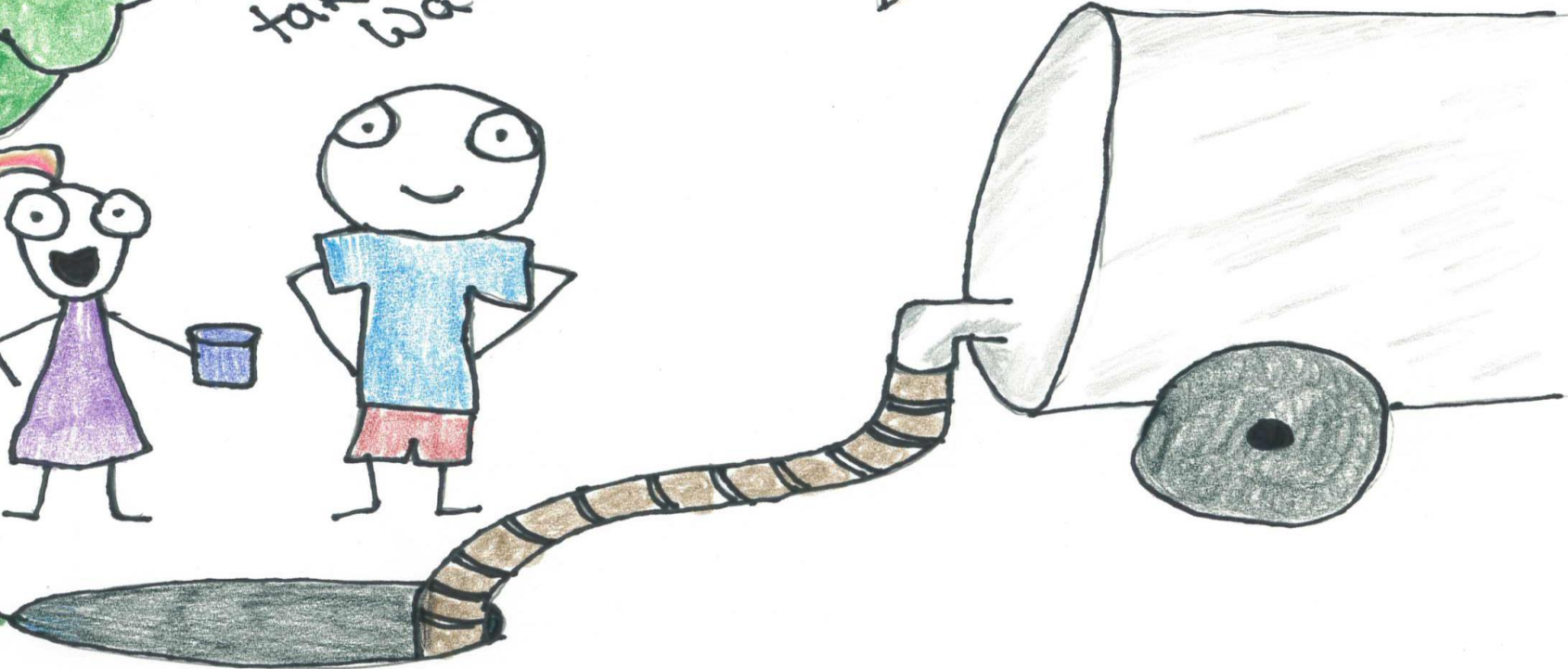
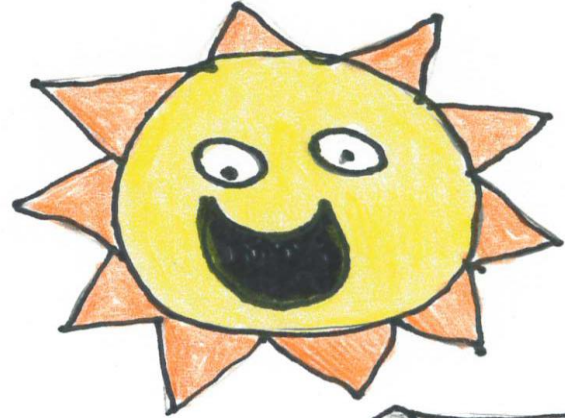
Silver Hawk Dr

Whitewater Dr

S-2980 E



C.V. can
take the
water



Permitting

Had to have two permits, two different project managers



Central Valley to the rescue!!!

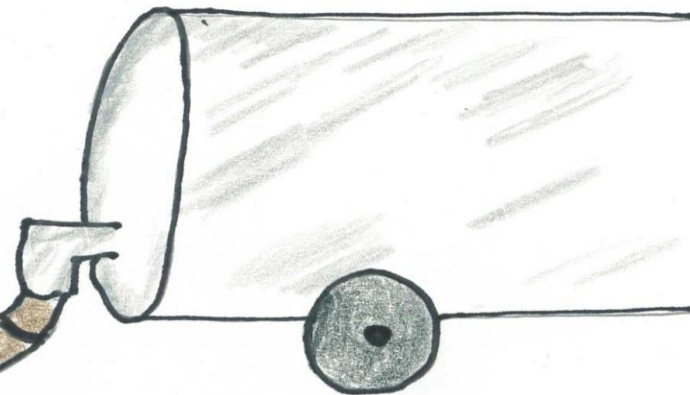
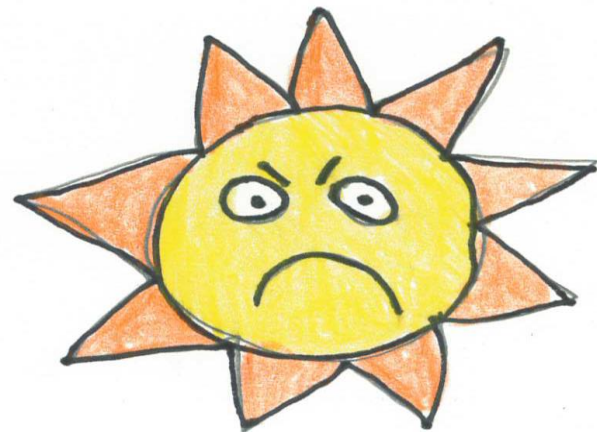
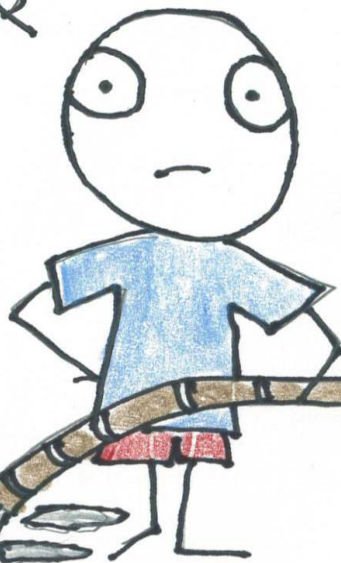
- ❖ Central Valley received 454 tanker trucks of water.
- ❖ Each truck held 5000 gallons.
- ❖ Average TDS 1500 mg/L
- ❖ Average TSS 277 mg/L
- ❖ Average pH range for accepted loads 11.2 – 12
- ❖ Every load was visually inspected.
- ❖ Central Valley rejected 46 loads for pH or heavy solids.
- ❖ pH low 2.1 **REJECTED**
- ❖ pH high 12.4 **REJECTED**

REJECTED



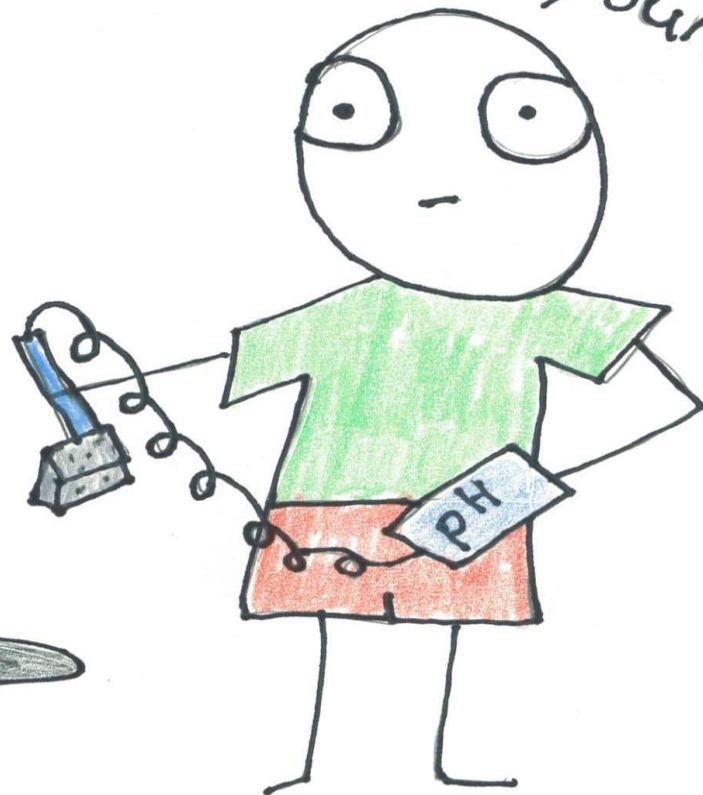


STOP!
PH 2.1





Maybe because
of the block of
cement on the
probe



Ummm Christi; Our
PH meter doesn't
read the same
as yours











Things I wish we had done better.

Had one permit.

Better communication with Health Department

Not taken them for their word that this was going to be handled properly.





2sticks6strings · 942 days ago

Very cool! Thanks to all the men and women who put forth hard work, long hours and putting yourself in danger to make our roads better!

5

□ Josh B. · 942 days ago

Seems like a responsible way to redo the road. Good job. Will save money, it's probably better for the environment and won't waste the old material.

1

□ Brent j. · 942 days ago

Where does all that water come from? I thought the government wanted us to save water??? I'm so confused....

1

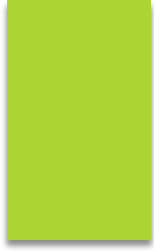
□ Zewaki · 942 days ago

Yeah, so like the article says the water is recycled in the process. Water comes from ocean rains, from cloud formations in the form of rain or snow, then it goes into lakes and streams. Water also comes from under ground. There ya have it.

2

□ godslayer · 942 days ago

They had done the same thing in Willard, up north. The water was from Willard bay i bet. In construction they use non-potable water. That is not the same water we drink. it can come straight from a well or river or lake.



Mattoe · 942 days ago

Did you not read the part how the recycle the water and materials? Saves the bridge infrastructure and recycles the concrete materials, all while saving money. How can you go wrong.

□ **bradthedad** · 942 days ago

They should use water from the nearby Jordan river, but they don't. They are using the same water ppl drink.

□ **Jim W.** · 942 days ago

Read! Most of the process water is recycled on site.

□ **Reallycool1238** · 942 days ago

People will still somehow complain.

Questions ?



© Creative Resource & Design



Hunter

7501R

Dragzilla

COP