

2017 Region 8 Pretreatment Conference Photos Deadwood SD































NACWA

NACWA
Lizbeth Davis



Lowflow

2012
Pesticide
Registration
Workshop

2012
Pesticide
Registration
Workshop

2012
Pesticide
Registration
Workshop



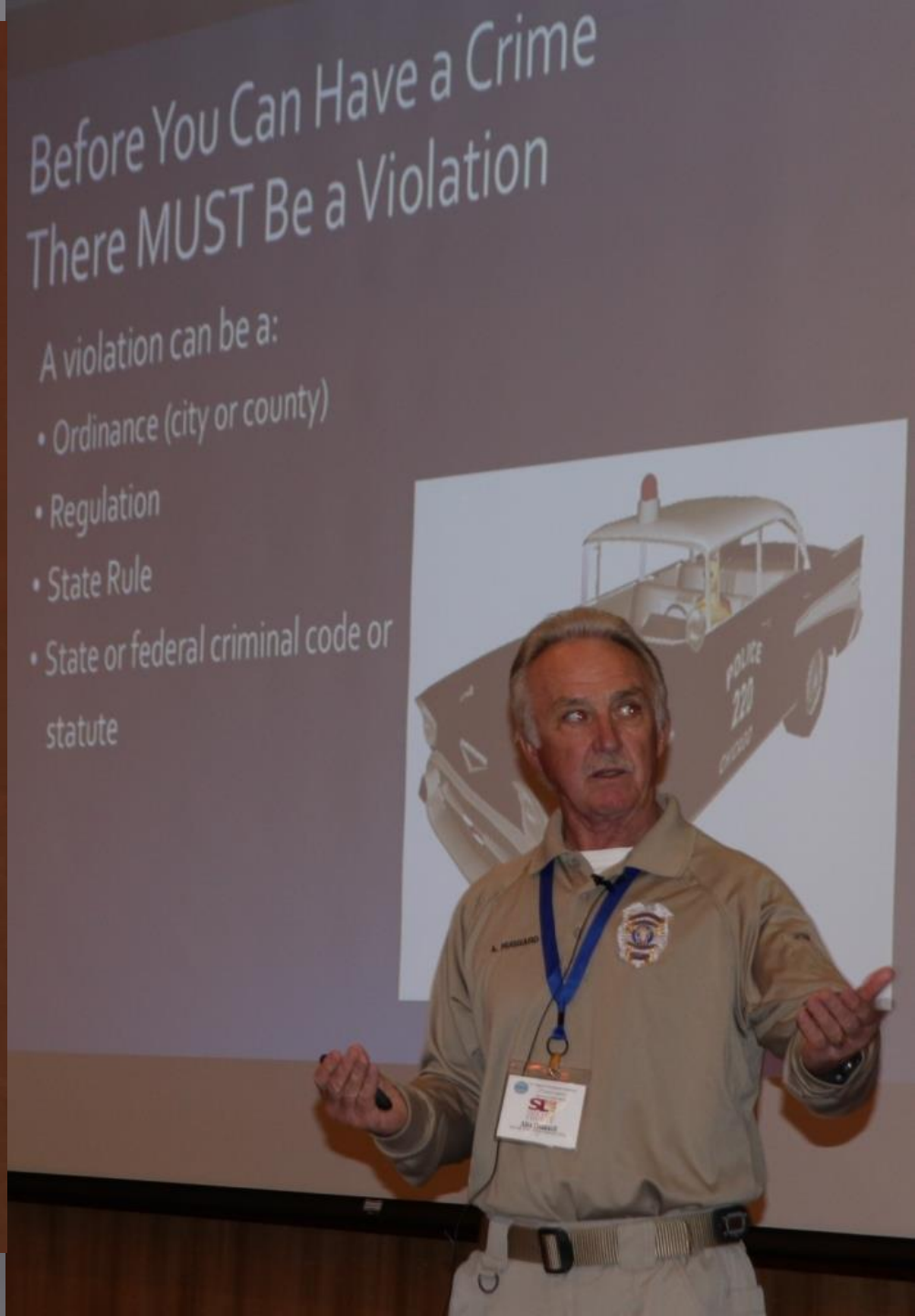
2012 Pesticide Registration Workshop
Drew East
Woodbury

www.rfpn.com





































Enforcement Considerations and Related Program Implementation

CWACS Pretreatment Training
2017 Region 8 Pretreatment Association Workshop

May 10, 2017

Don McCreesh
CWAC Consulting Services, LLC

CONTACT INFO

215-382-8888 484-262-1000
dmc@cwac.com don@cwac.com





Law Regarding Grease Removal

Stokes' law

noun, Physics.

1. the law that the force that retards a sphere moving through a viscous fluid is directly proportional to the velocity of the sphere, the radius of the sphere, and the viscosity of the fluid.

Origin of Stokes' law : named after Sir G. Stokes

Coles-law [kohl-slaw]

noun, Food

1. a salad of finely sliced or chopped raw cabbage, usually moistened with a mayonnaise dressing.









MAKES YOU THINK

"Wastewater treatment is the only process in the world where you can't control your inputs, but have to make a perfectly controlled output."



ENVIRONMENTAL TESTING LABORATORY WITH TOTAL PERFORMANCE YOU CAN COUNT ON

- REGULATORY RESPONSIBLE ON-DEMAND DATA
EXPERTISE PROVIDED BY LABLINK™
- 24/7 Real-time Data Access - 24/7
 - Interactive e-Herdsy Reports
 - Rapid Historical Data Completion and Download





Organic Chemistry

- TPH, TVPH, DRO & GRO
- BTEX, BTEX-MTBE
- Dissolved Gases: Methane, Ethane, Ethene
- VOC's, Semi-VOC's
- PCB's
- Pesticides & Herbicides

Inorganic Chemistry

- Clean Room: Low level metals by ICP-MS
- Dissolved Mercury by method 1631
- P, CVAA, HGAA
- Arsenic, AsAD, Total, Free, SCN
- Anions & Nutrients

Radiochemistry

- Gross Beta
- Radon
- Uranium
- Tritium
- Plutonium

Water Chemistry

- Hardness (ABA) & Sulfur Speciation
- Batch Leach Studies
- Free, SCN
- Nutrients

Services / Certifications

- Organic, Organic and Radiochemical
- & Most Western State Certification
- Room: Ultra-Low Level Metals
- Lab
- Trace Analysis
- Priority Pollutant Analysis
- Water Analysis
- Waste Characterization
- M, MWME
- and Analysis
- Storage Tanks (UST) Investigations
- Quality of Metals
- Agency Testing Program
- Reports
- Status
- Energy (DOE) Experience
- Deliverables (EDD), email & diskette





2016 Region 8 Pretreatment Conference Photos Durango Colorado







THE
IRISH EMBASSY
PUB

THE IRISH EMBASSY
PUB

SOUTHWEST
SERVICES

PUBS

IRISH
EMBASSY
PUB

THE IRISH EMBASSY
\$4.99 OF
SAUSAGE
CHICKEN POT
SHEPHERD'S
HAPPY HOUR

of
en
She
re.
body
20
ed
































DOUBLE TREE
BY HILTON™
DURANGO











MAKING IT HAPPEN



**SAFETY
FIRST**

SUMMARY

YOU are responsible for your sa

YOU need to be aware

YOU need to get involved

YOU can make a difference

















































































D&SNG

423

K-28



















2015 Region 8 Pretreatment Conference Photos Missoula Montana





finn & porter





never
been easier

LinkoCTS

Compliance Tracking Software

Manage CUP's

SUP's & more

Track Samples

& Results

Scheduling

to CFR 401

Compliant

and

ACS Laboratories, Inc.

A Full Service

Laboratory

Environmental Services

Environmental Services
Soil Sampling & Analysis
Water Sampling & Analysis
Air Quality Monitoring
Lead, Asbestos, PCBs, PAHs
Hazardous Waste Sampling
Groundwater Monitoring
Remediation Services
Environmental Impact Studies
Phase I, II, III Environmental Site Assessments
Asbestos Abatement
Lead Abatement
Mold Remediation
Remediation Project Management

Water Chemistry
Drinking Water Testing
Surface Water Testing
Groundwater Testing
Wastewater Testing
Water Quality Monitoring
Water Quality Assessment
Water Quality Modeling
Water Quality Data Management
Water Quality Reporting
Water Quality Compliance

Air Quality Chemistry
Ambient Air Quality Monitoring
Industrial Air Quality Monitoring
Vehicular Air Quality Monitoring
Air Quality Modeling
Air Quality Assessment
Air Quality Data Management
Air Quality Reporting
Air Quality Compliance

Journal of Regulations
Update: No. 1, 2014 - Revised Section
No. 1, 2014 (S. 101-10). The White House has issued Executive Order 13636, "Improving the Transparency of Government Operations." This Order is a key part of the President's agenda to improve government operations and transparency. It requires federal agencies to make their operations more transparent and to provide more information to the public. This includes making more information available on the agency's website, providing more information to the public about the agency's activities, and making more information available to the public about the agency's decision-making process. This Order is a key part of the President's agenda to improve government operations and transparency. It requires federal agencies to make their operations more transparent and to provide more information to the public. This includes making more information available on the agency's website, providing more information to the public about the agency's activities, and making more information available to the public about the agency's decision-making process.

ELIUS
Bio-LabVIEW
Advanced Process Control
Software for Bioprocesses

















TAMARACK BREWING
EST. 2007
MONTANA

FSD
Safety 2014








DOUBLETREE
BY HILTON™
MISSOULA - EDGEWATER









Regulation 33-Upper Colorado River and Dolores River Basins
Regulation 37-Lower Colorado River Basin

- Basin-Wide Rulemaking Hearing Monday, June 9, 2014
 - 10am
 - Grand Junction City Hall Auditorium
 - <http://www.colorado.gov/cs/Satellite/CDPHE-WQCC/CBON/125190851421>
 - Permits will be issued/renewed after the basin hearing
 - Contact Erin Scott 303-692-3506 or Kenan Diker 303-692-3997











DOUBLE TREE
BY HILTON
MISSOULA - EDGEWATER

EMERGENCY VISIT PROCEDURES 













U.S. FOREST SERVICE
SMOKE JUMPERS
6765 W. BROADWAY
DENVER, CO

SMOKE JUMPERS









HOLLISTER
CALIFORNIA













N173



Stupid Hurts

**Stupid
Hurts**

**BEAM ME UP
LOAD**





Life in a Lookout



An Eagle's View of the World

Lookouts were essential for the early logging industry, providing a clear view of the surrounding forest and any fires that might break out. They often lived in small, isolated cabins high in the mountains, where they spent long hours observing the forest and reporting any signs of trouble to the logging camp below.



MISSOULA'S FIRST FLIGHT

June 28th, 1911-Fort Missoula

MISSOULA'S FIRST FLIGHT

June 28th, 1911-Fort Missoula

On June 28, 1911, the first flight in Missoula, Montana, was made by a biplane piloted by...









NC886





Johnson Flying Service, Inc.

N24320

The Mann Gulch DC-3 NC 24320

On August 2, 1934, a Douglas DC-3 aircraft, registration NC 24320, was flying from Asheville, North Carolina to Knoxville, Tennessee. The aircraft was piloted by Captain [Name] and was carrying [Number] passengers and crew. The aircraft was flying at an altitude of [Altitude] feet when it encountered a severe thunderstorm. The aircraft was forced to land in a wooded area near Mann Gulch, Tennessee. The aircraft was destroyed by fire and the [Number] passengers and crew were killed. This was one of the deadliest single-engine aircraft accidents in the history of aviation.

COME SEE THE MANN GULCH C-47 AIRCRAFT AT THE MUSEUM OF MOUNTAIN FLYING



BIG SKY BREWING CO

MONTANA

5 4 1 7





PRICES

6 PACKS	6.00 BOTTLES	\$8
CASES		\$32
MT MIXER	1/2 YACK	\$15
GROWLER FILLS		\$7
PREMIUM FILLS	(OVER 1 LITER)	\$12

W-TUESDAY \$1 OFF GROWLER FILLS



RESERVED
PARKING
PERMIT
REQUIRED
\$100 FINE

VAN
ACCESSIBLE

BIG KIBBENING
OPEN

E3000
180-188

E3000













Ben's Krizek







Eddie Trevino
Director

DOUB
BY
MISSOULA



PROVOCATION CONCEPTS

- pH
- Metals
- Chemical storage
- Waste storage and quantity
- **PERMITS**
- Spill containment
- Self monitoring reporting
- Baseline monitoring
- 90 compliance report
- pH calibration log
- TTO
- Sampling
- Residue
- Other

provo
PUBLIC WORKS

City of Provo





I DIDN'T SAY IT WAS
YOUR FAULT

I SAID
I WAS

BLAMING YOU

42
\$ 12.998



WOMEN AND CATS DO AS THEY PLEASE

Men and dogs should relax and

just get used to the idea

43
\$ 12.998

PRETREATMENT CONFERENCE PHOTOS STEAMBOAT SPRINGS CO











2017 World Community
MIA NAME

17
59
GUINNESS
IRELAND











ENERGY LABORATORIES

Best resource for
ANALYTICAL EXCELLENCE

ENERGY LABORATORIES, INC. IS A LEADER
in providing analytical services and
equipment for the energy industry.

ENERGY LABORATORIES

The booth features a large blue backdrop with the company logo and text. A table in the foreground is covered with a blue cloth and has the company name and logo on the front. Several people are gathered around the table, looking at brochures and talking to staff members. A man in a dark suit is in the foreground on the left, looking at a tablet. A woman in a black shirt is looking at a brochure on the table. A man in a dark shirt and khaki pants is talking to a man in a light-colored shirt. A woman in a blue shirt is walking away from the booth on the right. The background shows a long hallway with other booths and people.

HACH
Be Right™

A blue vertical banner with the HACH logo and the slogan "Be Right™".

HACH
Be Right™

A smaller blue vertical banner with the HACH logo and the slogan "Be Right™".





ENERGY LABORATORIES



EXCELLENCE

Energy Laboratories, an analytical laboratory that provides independent, quality chemical and environmental analysis for waste, soil and water samples.

ENERGY LABORATORIES

Wynn Platts
Energy Laboratories















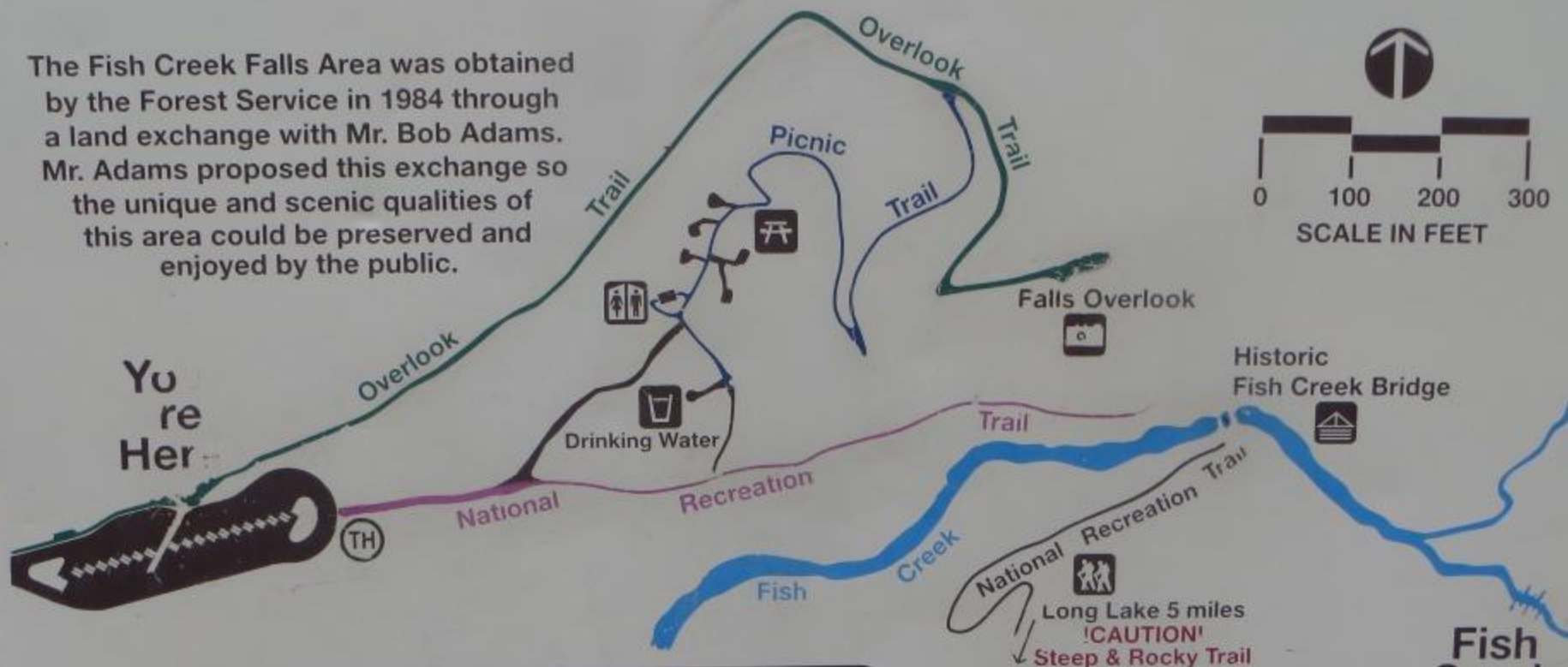






FISH CREEK FALLS RECREATION AREA

The Fish Creek Falls Area was obtained by the Forest Service in 1984 through a land exchange with Mr. Bob Adams. Mr. Adams proposed this exchange so the unique and scenic qualities of this area could be preserved and enjoyed by the public.



	Difficulty	Minimum Width	Length in miles	Maximum Grade	Max. Cross Slope	Surface Type
Overlook Trail	Easy	3.5'	1 1/6	11%	10%	asphalt
Picnic Trail	Moderate	4'	1/6	15%	13%	asphalt
National Rec.	Difficult	3.5'	1 1/6	24%	1%	native

major obstacles 12' ledges

Trail Information

The Overlook Trail (1/4 mile) takes you to a cliffside overlook, providing a picturesque view of the 280' waterfall

The Picnic Trail takes you to the picnic area and restroom via the overlook trail

The Fish Creek Falls National Recreation Trail (1/5 mile) takes you on a steeper route to the historic footbridge at the base of the falls.

Long Lake 5 miles
!CAUTION!
Steep & Rocky Trail



















#I AM A CELTIC

2013
CELTICS
PLAYOFFS

ALL STATE PUMP &
CONSULTING















2015 KRFA Workshop

Adam Sutter





Southwestern
Salad
with
Tortilla chips
Black

Southwestern
Salad with
Tortilla chips
Black









PRETREATMENT CONFERENCE PHOTOS DEADWOOD SD





















EXIT

















**YOUR
Fats, Oil & Grease
HEADQUARTERS**

Offering the most effective
FOG communications

20+ product options

12+ languages available

30+ utilities using
F.O.G. Monster Program



Pretreatment
has never
been easier

LinkoCTS
Compliance Tracking Software

Manage CUI's,
SUI's & more

Track Samples
& Results

Sched

ENERGY
COAL TESTING
OIL FIELD E & P
DENSIFIED WOOD
BIOMASS & RDF



LOW
ON-SITE SAMPLING
PRIORITY POLLUTANTS



COMPREHENSIVE TESTING
SERVICES SINCE 1991

NEW ULM, MN | BISMARCK, ND | NEVADA, IA







EXIT

THE NORTH AVENUE
BUILDING, 100 NORTH AVENUE
ANN ARBOR, MI 48106

Tim Grossbach
Executive Director, The North Avenue Building











CLUB 76

























Sheri Duren, City of Boulder

Water Quality and Environmental Services, Water Quality Section

303-440-1111







Presented by

Allen, GSD, MSU

EO, BioLynceus

laboratories, Inc.
Steamboat Springs, CO

- Radiochemistry**
- Gross Alpha / Gross Beta
 - Alpha Spectroscopy
 - Gamma Spectroscopy
 - ICP-MS
 - Liquid Scintillation Counter-Ratio
 - Lucas Cell Counting Systems
 - Uranium, Thorium & Lead Speciation

- Inorganic Chemistry**
- Class-100 Clean Room: Low level metals by ICP-AES
 - Ultra-Low Level Mercury by method 1631
 - Metals by ICP, CVAA, HGAA
 - Cyanide-WAQ, Total Free, SCN
 - Cations / Anions & Nutrients

- Organic**
- TPH, TCE, PCE, DCE, VC, VCl, VCla, VCbl

Problems Solved!



50% Reduction BOD Using
Treatment BOD



www.
Bio
Environ
Bio
Providing Biological





Use Soft
Reduces Salt
Reduces C
Increases Plumb
Maintenance
Promotes Dish Scr
Replaces Food Disp
Efficiency of To



through Preceptor Of
as Red shows
2.5-in-Rear Sinks
the U.S. L
the Chalk
to the top of
that

Drink

- Phos
- SOO
- Metal
- Disinf

Regulatory Expertise

- NELAP Ac
- Multiple St
- Accredited
- National Co
- Environment

For more info
line of







Eric Stumm

ECHO
ECHO
ECHO

















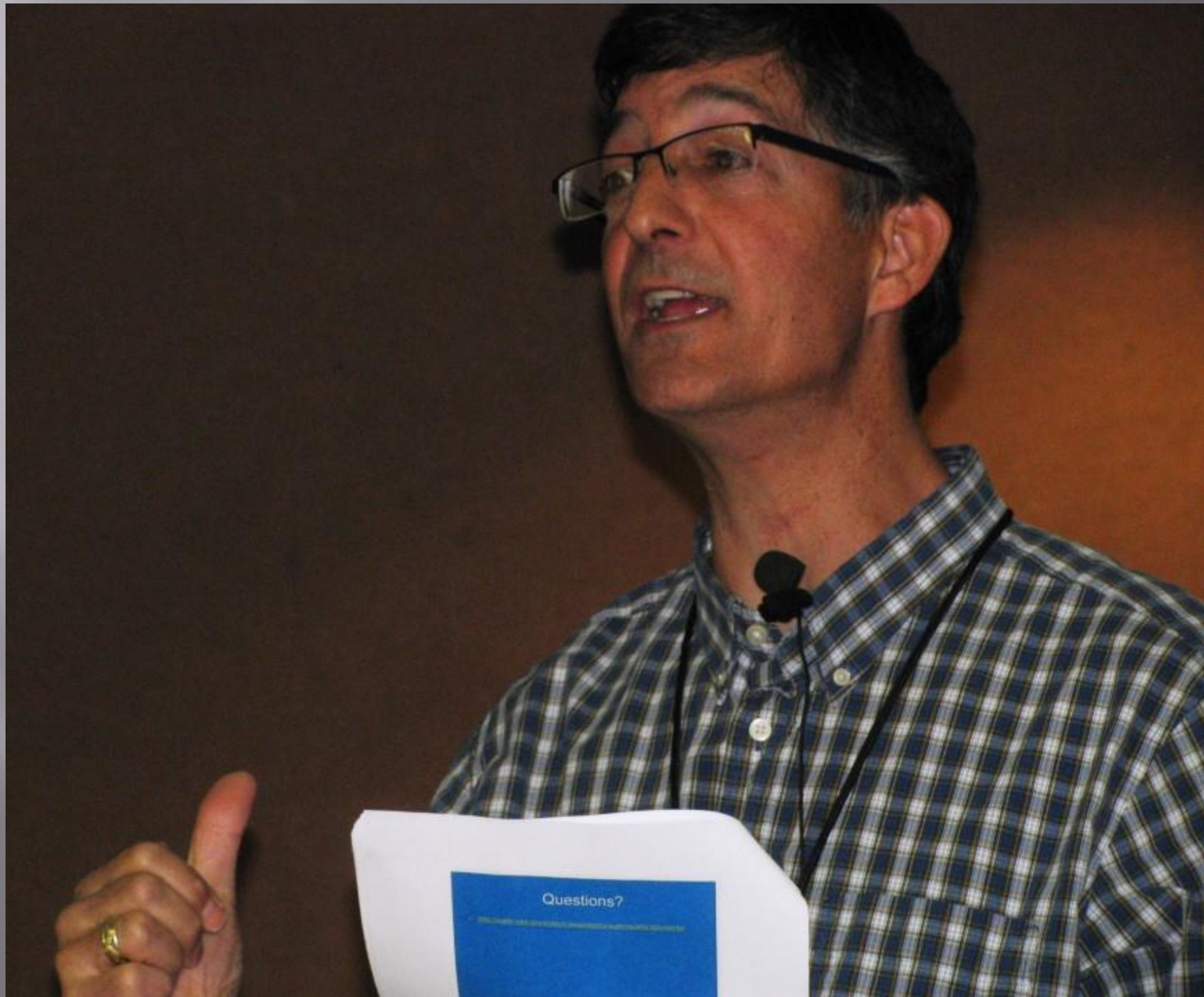
PRETREATMENT CONFERENCE PHOTOS BRYCE CANYON UT











Questions?









HACH
Be Right™

- Systems for water analysis
- All-inclusive service partners
- World-class technical training

ECH₂O
GREASE REMOVAL SYSTEM

Preceptor
Point of Use Solids Interceptor

Sediment Separator

Remote Site Monitoring and...





*Regulatory Crap You Don't Want
to Hear!!*

Antidegradation



Tuesday

Microsoft Po...

Water Qual...

10- Leland ...

...

...











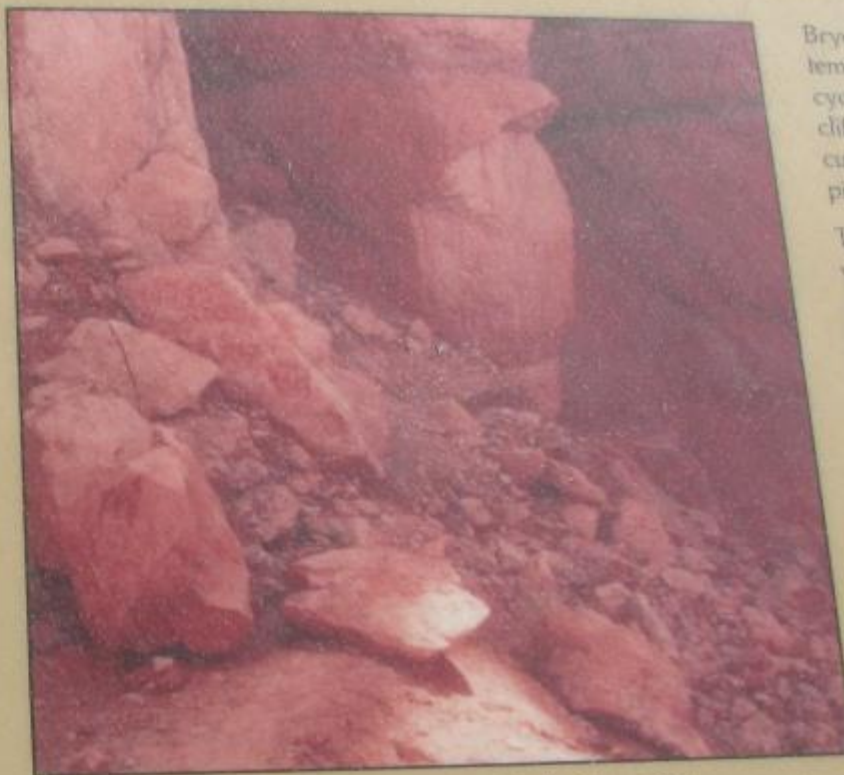




Colors at Bryce are the result of oxidized minerals—red, pink, and orange from iron; purple from manganese. The whites are purer limestone.



Rock shattered by frost-wedging. Look for similar signs of weathering throughout the canyon.



Rockslide on "Wall Street," Navajo Trail—May 1984

Hoodoos

Hoodoo – a pinnacle or other odd-shaped rock left standing by forces of erosion. From *naadag*: something which causes bad luck













SUNRISE
POINT 0.8 MI

SUNRISE
POINT

TO
FAIRYLAND
LOOP TRAIL

START

TO
SUNSET
POINT

QUEEN'S
CASTLE

QUEEN
VICTORIA

YOU
ARE
HERE

GULLIVER'S
CASTLE

HORSE TRAIL TO
PEEK-A-BOO
TRAIL

NORTH

The QUEEN VICTORIA formation is one example of the many pinacles, spires and walls named for famous personalities or man-made features. It is even now changing in appearance and will slowly disappear as erosion continues.





















GRS
ECH₂O™
GREASE REMOVAL SYSTEM

GRS
Preceptor
Solids Interceptor

HACH

4

1



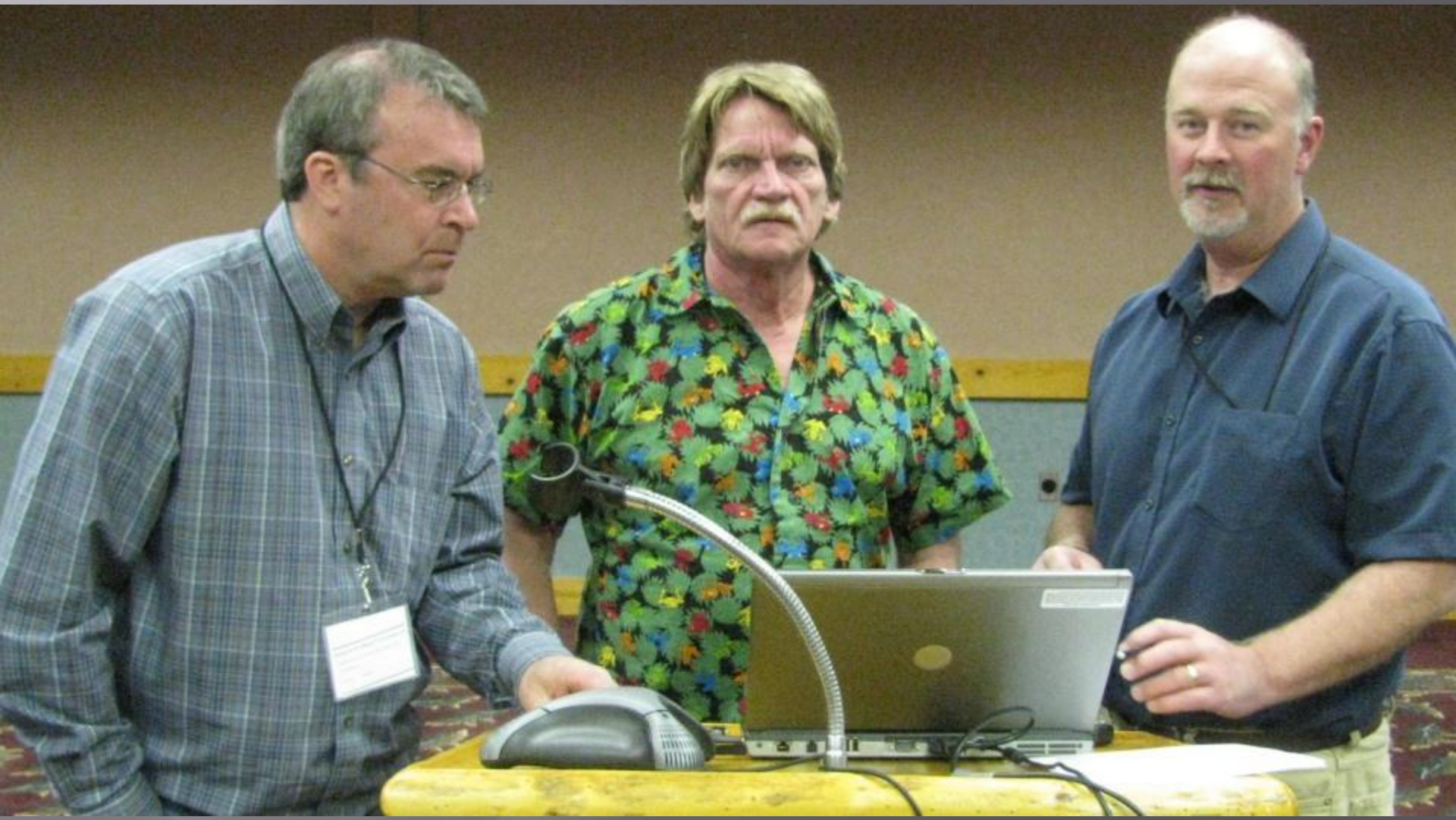
Unmatched
Service & Support

40 CFR 403
Compliant

Violations &
Enforcements

Quarterly & Annual
Reporting















REGION 8 PRETREATMENT
CONFERENCE PHOTOS
GRAND JUNCTION CO

2010















SPEEDO

ASSISTANT DIRECTOR OF CONVENTIONS BUREAU
/ 405.554.4000

CONSTANCE
MODROW
1000 N. 17th Ave
Tulsa, OK 74103



STOP n SAVE

Car Wash

JUCO TICKETS
ON SALE
HERE

QUALITY
ERG

GOOD VALUE
RESTAURANT

8



















4.59
3.07
3.55
4.46

WINE	1.19	WINE	1.19
WINE	1.19	WINE	1.19
WINE	1.19	WINE	1.19
WINE	1.19	WINE	1.19

CASES AVAILABLE AT DISCOUNT PRICE

goat
dressed
saddle

GS
GOLF & SPORTS CENTER



VODKA

VODKA











DATA SYSTEMS

FOG
Software

Highly Functional
Software

LinkoCTS
Compliance Tracking Software

Experience & Focus

Proven Accurate
Since 1996

Unmatched
Service

Large CUI's,
& more

Samples
Results

Link

Hach 20
Reliable

CONVENTION BUREAU

CHRIS SORENSEN
City of Grand Forks
Public Utilities















REGION 8 PRETREATMENT 2009 CONFERENCE PHOTOS CODY WYOMING





EXIT

mike's
hard
lemonade

MAKE IT
MIKE'S

CODY TAXI
CAB SERVICES
307-899-8881
CODY CAB
CAB LICENSED
CAB SPECIAL

BAR

T23

FITNE
CENTER



REGION 8 PRETREATMENT 2008 CONFERENCE PHOTOS DURANGO CO

















DOUBLE TREE
HOTEL

RESTAURANT-LOUNGE

CALL FOR
MOTHERS DAY BRUNCH
392-3950

WEST PARKS
SWIMMING & FITNESS





INTERNATIONAL AMERICAN SOCIETY OF
MULTIPLE SCLEROSIS
LOCAL CHAPTER

GO FOR THE GORGE
JULY 4-5, 2008

One Great-West **ms** bike tour





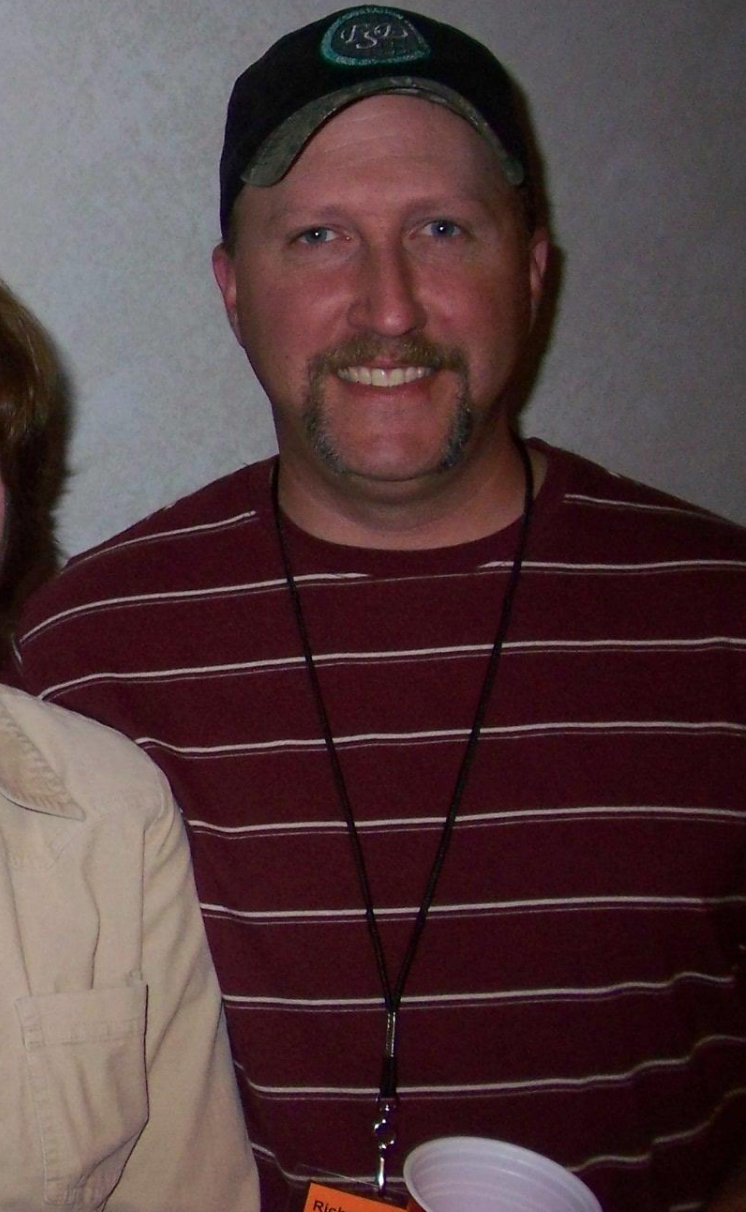
MS NATIONAL MULTISPORT SOCIETY
COURTESY CHAIR

FOR THE GORG
JULY 15-20
Great-West
ms 15 bike tour
Presented by Think P.







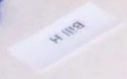
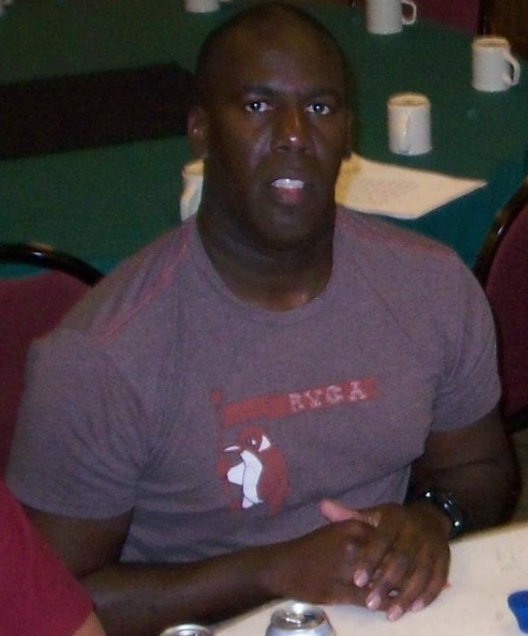






Richard Heninger
Forward Solutions District

THE NORTH FACE













the
Sires
11

the
11









BEER BREWERS!
MONDAY SPECIALS
P.B.R. \$1.25
Double Wells \$3.25
Get yer Rhinos
parties \$3.00
beer crates lighters
flasks and much more

MONTANA
BLK DOG ALE
BREMEN BEERY

VICTORIAS 800
WINE

ALASKAN E.S.B.
BROKEN TOP BECK
MONDAY SPECIALS
P.B.R. \$1.25
Double Wells \$3.25
Get yer Rhinos parties \$3.00
beer crates lighters flasks and much more



















David Smith
City of Lincoln



















Bad move, Al!



**There's a fine line between team players
and co-conspirators!**











FIRE EXTINGUISHER
INSIDE
FIRE STATION







7 11 '96

Deadwood 2003

Nice
Post

Nice
Post



Deadwood 2003



