

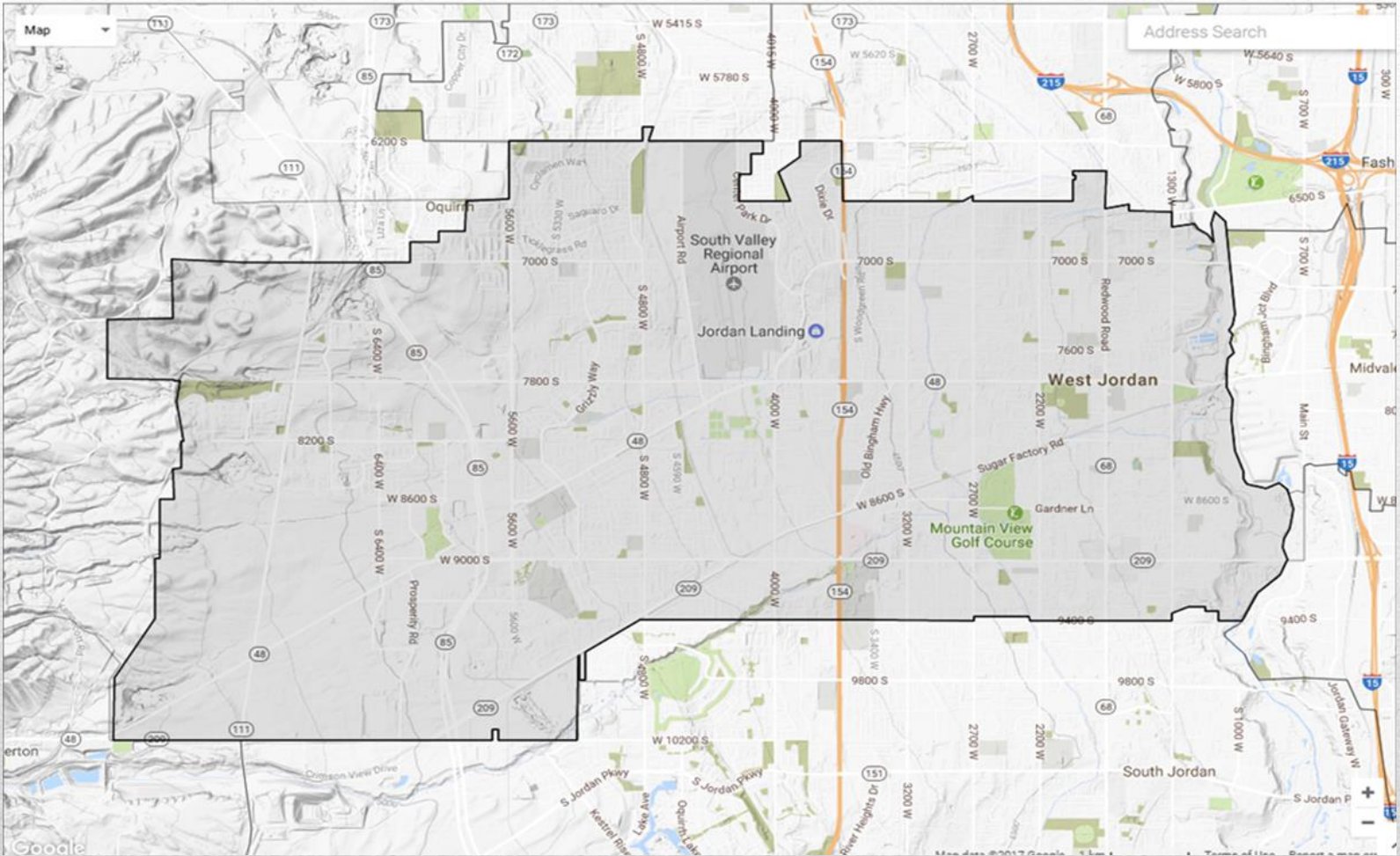


AIR QUALITY & PRETREATMENT

**What do you
make at your
job?**

**Mostly
inappropriate
comments**

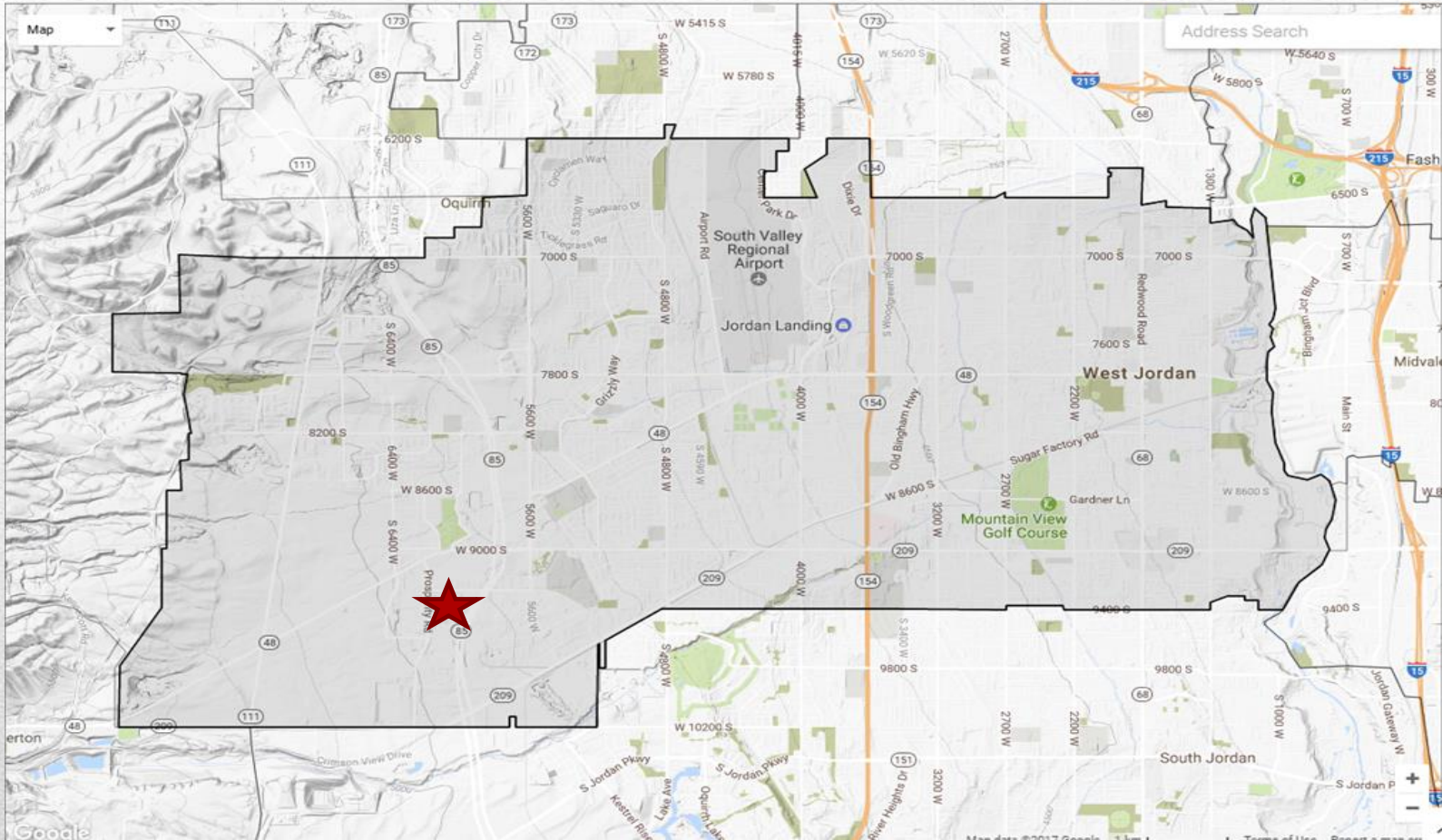




City of West Jordan

- Population of 110,920 residents
- Median Age of residents is 30.8 years
- Median Household Income is \$69,000
- Median Home price is \$250,000

City Demographics



Yogurt Plant Location



Yogurt Plant in 2000



New Pretreatment Plant 2010



EQ Tank



Screening



Double DAFTs



Moving Bed Biological Reactor (MBBR)



Sludge Holding Tank



Biofilter



Odor near yogurt plant prompts complaints from neighbors

By Angie Reed | Posted Dec 31st, 2013 @ 9:05am

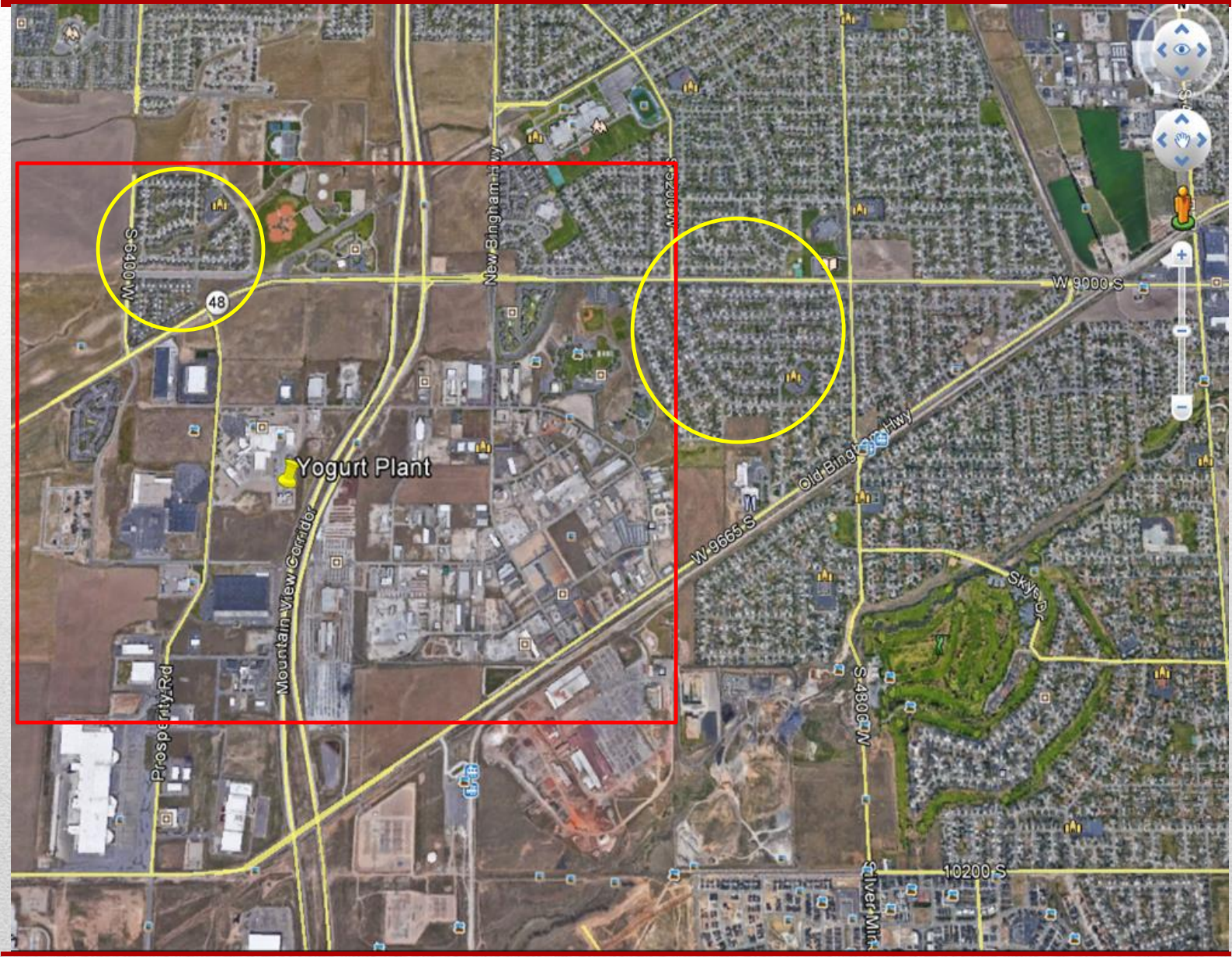
2013 Odor Complaints



People were getting ill



Yogurt Plant 2013



- From 2000 to 2008 they produced drinkable yogurt
- In 2008 they went from drinkable yogurt to Greek yogurt
- Production increased exponentially
- So did milk deliveries,
 - It takes three cups of milk, and
 - 90 gallons of water,
 - To make one cup of Greek yogurt



What Changed?



Sludge Holding Tank



Flooded Biofilter

**BEAUTIFUL SALT LAKE
CITY**



**WHERE OUR POLLUTION
IS #1**

Severe Inversion

- Sludge Tank was burping
- When loading sludge into tanker trucks the tanker lids have to be opened
- Biofilter was flooded with water
- Inversion was keeping odors low
- Yogurt Manufacturer staff were oblivious and in denial that they were the cause of the odors.

Findings

- Yogurt sludge still stinks!!
- Odors are being handled better but still prevalent
- Affect a businesses brand and they will act
 - West Jordan Facebook page
 - Odor complaints in the news
- **Do Not** believe a reporter when they say they will not use your statement without telling you!
 - You will end up being quoted in the paper and your boss will hear you on the radio on his way into work.

Take Away!

Over the past month, the reclamation facility has received at least 200 complaints from a group of residents living between 9000 South and Old Bingham Highway, from Mountain View Corridor to 4800 West, according to Pretreatment Director Spencer Parkinson.

"I've had some that say it's very nauseating. I've had others that say it's just a horrible smell," he said. "Others have said it smells like rancid meat."

He said *****'s sewer line doesn't discharge in that area so he believes it is airborne odor.

Parkinson said the reclamation facility is working with ***** to resolve the issue.

"The problem is these homes reside on the edge of an industrial park where there are various manufacturers of food products, metal products and different things," he said.

News Article



**YOU DON'T KNOW
WHAT YOU HAVE
UNTIL IT'S GONE.**

**FOR EXAMPLE,
TOILET PAPER.**

QUESTIONS?

Spencer Parkinson

Pretreatment Director

(801) 495-5452

sparkinson@svwater.com

